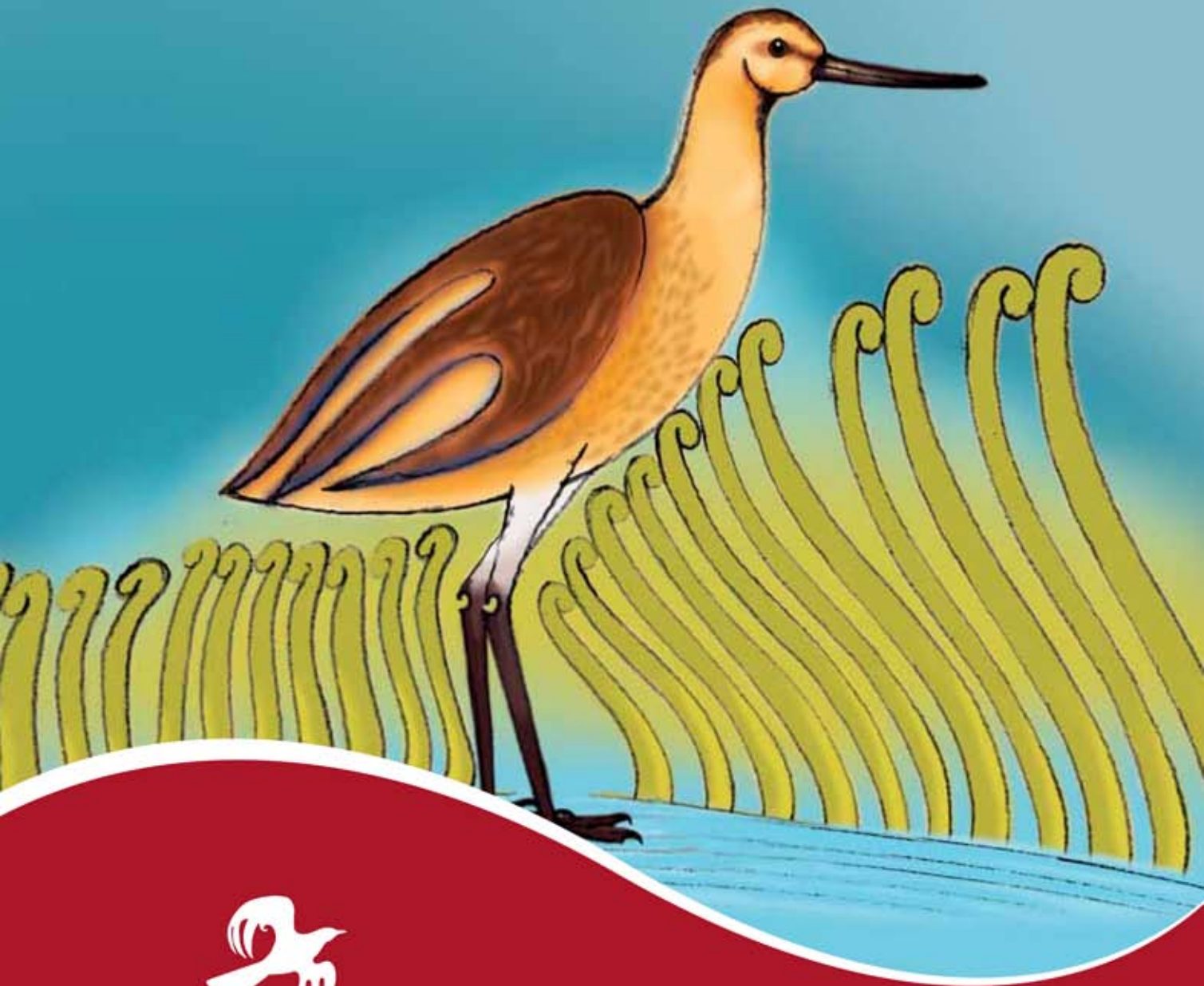


He Manu Taketake

He Tuhinga Paki Whakamārama



He Manu Tuhituhi

He Pukapuka Arataki i te Kaituhi

Ngā Ihirangi

Hei Whakamārama	4
Ko te kaupapa waka ki te moana hoea ai	5
Te Pūtake o te Tuhinga Paki Whakamārama	6
Ngā Momo Tuhinga Paki Whakamārama	7
Te Paki Whakamārama Tuku Iho	8
He Paki Whakamārama Tuku Iho hei Tauira	9
Ngā Āhutatanga Reo o te Paki Whakamārama Tuku Iho	10
Ngā Wāhanga o te Paki Whakamārama Tuku Iho	13
He Ara Tuhituhi i te Paki Whakamārama Tuku Iho	16
He Tauira Anō	27
Te Paki Whakamārama Pohewa	34
He Paki Whakamārama Pohewa hei Tauira	35
Ngā Āhutatanga Reo o te Paki Whakamārama Pohewa	36
Ngā Wāhanga o te Paki Whakamārama Pohewa	40
He Ara Tuhituhi i te Paki Whakamārama Pohewa	43
He Tauira Anō	54
He Mahere Ārahi i te Tuhituhi	61
Ngā Tauira Tuhinga	65
Te Kuputaka	72
Ngā Tohutoro	73
Te Matapaki	74
Te Tukanga Tuhituhi	76

Hei Whakamārama

He pukapuka tēnei mā te kaiako, mā te ākongā hoki, he pukapuka āwhina i ngā akoranga tuhituhi paki whakamārama.

Ki te kaiako,

Ko te tikanga māu tēnei pukapuka e whakamahi. Māu te wāhanga o te pukapuka me te taura tuhinga e whiriwhiri e hāngai ana ki te momo akoranga, ngā mōhiotanga me ngā pūkenga o ngā ākongā.

Te pūtake o tēnei pukapuka

Ko te pūtake o te pukapuka nei he whakaatu i:

- Te pūtake o te tuhinga paki whakamārama
- Ngā momo tuhinga paki whakamārama
- Ngā āhuatanga reo o te tuhinga paki whakamārama
- Ngā wāhanga o te tuhinga paki whakamārama
- Tētahi ara tuhituhi

He tuhinga hei taura¹

Kua whakaaturia tētahi taura tuhinga mō ia momo tuhinga paki whakamārama. Kua whakaaturia ōna āhuatanga reo me ōna wāhanga. Kua whāia hoki e te kaituhi tētahi ara tuhituhi hei tuhi i tāna taura tuhinga. Ko te pūtake o te ara tuhituhi he āwhina i ngā ākongā ki te tīmata ki te takahi i te ara tuhituhi paki whakamārama. Ko te whāinga kia whārikihia te tūāpapa mō ngā āhuatanga reo me ngā wāhanga o te tuhinga paki whakamārama.



Te matapaki

Ka kite koe i te weka i ētahi whārangi o te ara tuhituhi. Ko te putanga o te weka he tohu whakamaumahara mā te matapaki ka oti pai ai tēnei wāhanga o te tuhinga. Mā te whakawhitiwhiti kōrero, mā te āta pātaitai a te kaiako e āwhinatia ai te ākongā kia whanake ōna pūkenga tuhituhi. Kei muri i tēnei pukapuka he whārangi e whakaatu ana i ngā huarahi matapaki, ngā momo matapaki me ētahi pātai hei āwhina i te kaituhi.

Te tukanga tuhituhi

Kua whakaaturia tētahi tukanga tuhituhi ki muri i tēnei pukapuka. Ko te tikanga kia toro haere te kaituhi ki ngā wāhanga o te tukanga nei kia pai ai te takoto o tāna tuhinga.

He taura anō

Ko ngā taura anō hei whakaatu i te whanaketanga o ngā āhuatanga reo, ngā tikanga tuhituhi me ngā kupu mō te tuhinga paki whakamārama. Whiriwhiria te taura e hāngai ana ki ngā pūkenga me ngā mōhiotanga o ngā ākongā hei whakaakoranga.

Me pēhea te whakamahi i tēnei pukapuka?

Ko te mea nui, i te tīmatanga māu ēnei momo tuhinga e whakaatu, e whakaako hoki mā te **huarahi whakaako tuhituhi ngātahi**. Whai muri, ka mahia mā te **huarahi whakaako tuhituhi me te arahanga**, tae noa ki te wā ka taea e te ākongā te mahi mā te **huarahi whakaako tuhituhi takitahi**.²

Ko te mahere e whai nei hei āwhina i a koe ki te tāutu i te huarahi whakaako tuhituhi e tika ana mō ngā ākongā.

Ngā Reanga³ o He Ara Rērere me ngā Huarahi Whakaako

	Te Huarahi Whakaako Tuhituhi Ngātahi	Te Huarahi Whakaako Tuhituhi me te Arahanga	Te Huarahi Whakaako Tuhituhi Takitahi
Ka Oho	Te paki whakamārama		
Ka Whai Huru	Te paki whakamārama		
Ka Marewa	Te paki whakamārama	Te paki whakamārama	
Ka Rere		Te paki whakamārama	Te paki whakamārama

¹ Kei muri i tēnei pukapuka he kape o ngā taura tuhinga katoa. Ka taea ēnei whārangi te tārua.

² Tirohia te pukapuka aratohu mā te kaiako *Ka Rere te Manu ki te Ao Tuhituhi*, Te Wāhanga Tuatoru, mō te whakamāramatanga o ēnei huarahi e toru mō te whakaako tuhituhi.

³ Tirohia te pukapuka aratohu mā te kaiako *Ka Rere te Manu ki te Ao Tuhituhi*, Te Wāhanga Tuarua, mō ngā āhuatanga o ngā ākongā kei ngā reanga 'Ka Oho', 'Ka Whai Huru', 'Ka Marewa', 'Ka Rere'.

Ko te kaupapa waka ki te moana hoea ai, ko te kāhui atua ki te rangi rere ai

Tēnā koutou katoa.

Ia tau, ia tau, e rua ngā rerenga roa o te kūaka. He rerenga atu ki whenua pāmamao, he hokinga mai ki Aotearoa. E ai ki ngā kōrero o ngā rā o mua, nā te kūaka ō tātou tūpuna i ārahi ki Aotearoa mai i Hawaiki.

Kei roto i tēnei pukapuka he paki whakamārama pohewa mō te kūaka me ōna rerenga roa.

Heoi anō, ko Kūaka te kaiārahi hei tuhituhi i te paki whakamārama.



Te Pūtake o te Tuhinga Paki Whakamārama



Ko te pūtake o te tuhinga paki whakamārama he whakamārama i tētahi āhuatanga o te taiao.

Ngā Momo Tuhinga Paki Whakamārama



*Ka tirohia ēnei momo tuhinga
paki whakamārama e rua:*

1. Te paki whakamārama tuku iho
2. Te paki whakamārama pohewa

**Hei whakataurite i te paki whakamārama
tuku iho me te paki whakamārama pohewa**

	Te Whakamāramatanga
Te Paki Whakamārama Tuku Iho	He momo tuhinga e whakamārama ana i tētahi tū āhuatanga o te taiao. I te tuatahi kua tukuna iho ā-wahatia nei hei paki, kātahi ka tuhia.
Te Paki Whakamārama Pohewa	He momo tuhinga e whakamārama ana ki tā te kaituhi whakaaro pohewa i tētahi āhuatanga o te taiao.

Te Paki Whakamārama Tuku Iho



Te Pūtake

Ko te pūtake o te paki
whakamārama tuku iho
he whakamārama i tētahi
tū āhuatanga o te taiao. I
te tuatahi kua tukuna iho
ā-wahatia nei hei paki,
kātahi ka tuhia.

He Paki Whakamārama Tuku Iho hei Taurira



*Ka whakaatu au i te paki whakamārama
tuku iho kua tuhia e Manaia mō Rona.*

Ka whakaaturia:

- Ngā āhuatanga reo
- Ngā wāhanga
- Te ara tuhituhi i whāia e Manaia

Tirohia tāna tuhinga:

Ka Riro a Rona i te Marama

I ngā rā o mua, tērā tētahi tupuna nō tātou, ko Rona tōna ingoa. E noho ana a Rona me tōna whānau ki tētahi papakāinga iti. He manga iti e pātata ana ki te papakāinga. He pakupaku ngā tamariki a Rona, nā reira nā Rona te wai i tiki mai i te manga ia rā, ia rā.

I tētahi pō atarau e moe ana a Rona me āna tamariki. Kātahi ka oho te pēpi, ka whakaoho hoki i ōna tuākana. Ka karanga atu rātou ki a Rona kia homai he inu wai. Ahakoa tōna hiamoe, maranga ana a Rona, haere atu ana ki te manga, he tahā kei tētahi ringa.

He whāiti, he kōpikopiko te ara mai i te kāinga ki te manga, he rākau teitei kei ngā taha me ngā ātārangi pōuriui. Engari, i whitingia te ara e te marama, ā, he māmā te haere a Rona. Kātahi ka huna te marama ki muri i tētahi kapua. Kua pōuri katoa te ara whāiti, ā, ka tūtuki ngā waewae o Rona ki ngā pakiaka nunui o ngā rākau. Pupū ana te riri o Rona ki te marama. Ka titiro ia ki runga ki te marama, ka hāmama tōna waha me ana kōrero hahani ki a ia, “Upokokōhua koe, Marama! Tō ngoikore hoki ki te tiaho mai. E mate inu wai ana aku tamariki, engari tē taea e au te ara te kite.”

Kātahi ka riri anō hoki te marama ki a Rona. Whakatopa iho ana, whātoro ana te ringa, ā, mau ana ki a Rona. Ka pāngia a Rona e te mataku. Ka toro tana ringa ki te rākau ngaio i tōna taha, mau pupuri ana, me te karanga atu ki tōna whānau kia haere mai ki te āwhina i a ia. Kāore he aha ki te marama. Ka nui ake tōna riri, ka nui ake hoki tōna kaha. Ahakoa ngā inoi atu a Rona ki te marama me te pupuri ki te rākau ngaio, ka kumea ia, ka wāhia te rākau ngaio, ā, ka tangohia ake a Rona.

Ka haria ake a Rona e te marama ki tōna kāinga i te rangi. Mai i taua wā kei runga a Rona i te marama e noho ana, e mātakitaki iho ana ki tōna kāinga o mua. Nō reira, ki te titiro koe ki runga ki te marama i ngā pō atarau, ka kitea tonutia a Rona, tana tahā me te rākau ngaio hoki.

Ngā Āhuatanga Reo o te Paki Whakamārama Tuku Iho

*Ka tirohia ētahi o ngā āhuatanga reo
o te paki whakamārama tuku iho:*

- Te reo tohu wāmua
- Te reo raupapa
- Te whakawhiti kōrero
- Te reo whakaahua
- Te reo tūhono i te take me te pānga
- Te kīwaha

Tirohia te whārangi e whai ake nei.



Te Whakamāramatanga o ngā Āhuatanga Reo

Te reo tohu wāmua

Ko tā tēnei reo he tohu i te wā i mahia ai tētahi mahi.

Hei tauira:

I ngā rā o mua tērā tētahi tupuna nō tātou.

I tētahi pō atarau e moe ana a Rona me āna tamariki.

Te reo raupapa

Ko tā tēnei reo he tohu kei te whai mai tētahi āhuatanga i tētahi, kia mārama te raupapa o ngā mahi.

Hei tauira:

Kua pōuri katoa te ara whāiti, ā, ka tūtuki ngā waewae o Rona ki ngā pakiaka.

Kātahi ka riri anō hoki te marama ki a Rona.

Te whakawhiti kōrero

Ko ngā whakawhiti kōrero ngā kupu i kōrerotia ai e ngā kiripuaki. Mā ngā whakawhiti kōrero ka mōhiohia te tuakiri o te kiripuaki, ōna tino whakaaro, ōna kare-ā-roto hoki.

Hei tauira:

Ka titiro ake ia ki te marama, ka hāmama tōna waha me ana kōrero hahani ki a ia, “Upokokōhua koe, Marama! Tō ngoikore hoki ki te tiaho mai. E mate inu wai ana aku tamariki, engari tē taea e au te ara te kite.”

Te reo whakaahua

Mā te reo whakaahua, arā, mā te āta whiriwhiri i ngā kupu hei whakaahua i te wāhi, i te āhua o ngā kiripuaki, i te mahi a ngā kiripuaki me ō rātou kare-ā-roto, ka ‘tuhia he whakaahua’ hei whakawana, hei whakaoho, hei whakauru i te kaupānui ki te paki.

Hei tauira:

He whāiti, he kōpikopiko te ara mai i te kāinga ki te manga.

Pupū ana te riri o Rona ki te marama.

Whakatopa iho ana ia, whātoro ana te ringa.

Te reo tūhono i te take me te pānga

Ko tā tēnei reo he tohu i te tūhonotanga o tētahi āhuatanga me te take i puta ai taua āhuatanga.

Hei tauira:

Nō reira, ki te titiro koe ki runga ki te marama i ngā pō atarau, ka kitea tonutia a Rona, tana tahā me te rākau ngaio hoki.

Te kiwaha

Ko tā te kiwaha he whakamārama i tētahi āhuatanga kē. He momo kōrero hei whakanui, hei whakaiti rānei i ngā kōrero kua kōrerotia kētia, ā, i ngā kōrero hoki kei te haere. He momo kīnaki. Ka kitea ngā kiwaha i ētahi o ngā whakawhiti kōrero a ngā kiripuaki, i ō rātou whakaaro rānei.

Hei tauira:

“Upokokōhua koe, Marama!” “Tō ngoikore hoki ki te tiaho mai.”



Tirohia ngā āhuatanga reo kua whakamahia
e Manaia i tāna paki whakamārama tuku iho.

Te reo tohu wāmua

I ngā rā o mua

.....

Te reo raupapa

ka kumea ia, ka wāhia
te rākau ngaio, ā, ka
tangohia ake a Rona.

.....

Te whakawhiti kōrero

“Upokokōhua koe,
Marama! Tō ngoikore
hoki ki te tiaho mai.
E mate inu wai ana aku
tamariki, engari tē taea
e au te ara te kite.”

.....

Te reo whakaahua

He whāiti, he
kōpikopiko te ara mai
i te kāinga ki te manga.
Pupū ana te riri o Rona
ki te marama.
Whakatopa iho ana ia,
whātoro ana te ringa.

.....

Te reo tūhono i te take me te pānga

Nō reira, ki te titiro koe
ki runga ki te marama
i ngā pō atarau, ka kitea
tonutia a Rona, tana
tahā me te rākau ngaio
hoki.

.....

Te kiwaha

“Upokokōhua koe”
“Tō ngoikore hoki”

Ka Riro a Rona i te Marama

I ngā rā o mua, tērā tētahi tupuna nō tātou, ko Rona tōna ingoa. E noho ana a Rona me tōna whānau ki tētahi papakāinga iti. He manga iti e pātata ana ki te papakāinga. He pakupaku ngā tamariki a Rona, nā reira nā Rona te wai i tiki mai i te manga ia rā, ia rā.

I tētahi pō atarau e moe ana a Rona me āna tamariki. Kātahi ka oho te pēpi, ka whakaoho hoki i ōna tuākana. Ka karanga atu rātou ki a Rona kia homai he inu wai. Ahakoa tōna hiamoe, maranga ana a Rona, haere atu ana ki te manga, he tahā kei tētahi ringa.

He whāiti, he kōpikopiko te ara mai i te kāinga ki te manga, he rākau teitei kei ngā taha me ngā ātārangi pōuriuiri. Engari, i whitingia te ara e te marama, ā, he māmā te haere a Rona. Kātahi ka huna te marama ki muri i tētahi kapua. Kua pōuri katoa te ara whāiti, ā, ka tūtuki ngā waewae o Rona ki ngā pakiaka nunui o ngā rākau. Pupū ana te riri o Rona ki te marama. Ka titiro ia ki runga ki te marama, ka hāmama tōna waha me ana kōrero hahani ki a ia, “Upokokōhua koe, Marama! Tō ngoikore hoki ki te tiaho mai. E mate inu wai ana aku tamariki, engari tē taea e au te ara te kite.”

Kātahi ka riri anō hoki te marama ki a Rona. Whakatopa iho ana, whātoro ana te ringa, ā, mau ana ki a Rona. Ka pāngia a Rona e te matakū. Ka toro tana ringa ki te rākau ngaio i tōna taha, mau pupuri ana, me te karanga atu ki tōna whānau kia haere mai ki te āwhina i a ia. Kāore he aha ki te marama. Ka nui ake tōna riri, ka nui ake hoki tōna kaha. Ahakoa ngā inoi atu a Rona ki te marama me te pupuri ki te rākau ngaio, ka kumea ia, ka wāhia te rākau ngaio, ā, ka tangohia ake a Rona.

Ka haria ake a Rona e te marama ki tōna kāinga i te rangi. Mai i taua wā kei runga a Rona i te marama e noho ana, e mātakitaki iho ana ki tōna kāinga o mua. Nō reira, ki te titiro koe ki runga ki te marama i ngā pō atarau, ka kitea tonutia a Rona, tana tahā me te rākau ngaio hoki.

Ngā Wāhanga o te Paki Whakamārama Tuku Iho



E whā ngā wāhanga o te paki whakamārama tuku iho:

1. Te tapanga
2. Te whakatakinga
3. Te raupapatanga mahi
4. Te whakataunga

Tirohia te whārangi e whai ake nei.

Te Whakamāramatanga o ngā Wāhanga

Te tapanga

Hei tāutu i te kaupapa o te paki, ā, hei kapo hoki i te kaipānui
kia pānui tonu.

Te whakatakinga

Hei whakamōhio atu ki te kaipānui i te whakatakinga o te paki.

Ka whakautua ēnei pātai:

1. I nahea te mahi i mahia ai?
2. Ko wai ngā kiripuaki?
3. He pēhea te āhua o te wāhi?

Ka tuhia hoki:

Tētahi rerenga tuhituhi e tohu ana i tētahi tū āhuratanga o te
mahi kei te haere.

Te raupapatanga mahi

Hei whakamōhio atu ki te kaipānui i te raupapa o te mahi.

Ka whakautua ēnei pātai:

1. I pēhea te mahi i tīmata ai?
2. I pēhea te mahi i tipu haere ai ki tōna teiteitanga?
3. He aha tōna teiteitanga?

Te whakataunga

Hei whakamōhio atu ki te kaipānui i te whakataunga o te mahi.

Ka whakautua ēnei pātai:

1. I pēhea te mahi i tau ai?
2. He aha te āhuratanga i puta mai ki te taiao?



Tirohia ngā wāhanga e whā o te paki whakamārama tuku iho a Manaia.

Te tapanga

Te whakatakinga

Te raupapatanga mahi

Te whakataunga

Ka Riro a Rona i te Marama

I ngā rā o mua, tērā tētahi tupuna nō tātou, ko Rona tōna ingoa. E noho ana a Rona me tōna whānau ki tētahi papakāinga iti. He manga iti e pātata ana ki te papakāinga. He pakupaku ngā tamariki a Rona, nā reira nā Rona te wai i tiki mai i te manga ia rā, ia rā.

I tētahi pō atarau e moe ana a Rona me āna tamariki. Kātahi ka oho te pēpi, ka whakaoho hoki i ōna tuākana. Ka karanga atu rātou ki a Rona kia homai he inu wai. Ahakoa tōna hiamoe, maranga ana a Rona, haere atu ana ki te manga, he tahā kei tētahi ringa.

He whāiti, he kōpikopiko te ara mai i te kāinga ki te manga, he rākau teitei kei ngā taha me ngā ātārangi pōuriuiri. Engari, i whitingia te ara e te marama, ā, he māmā te haere a Rona. Kātahi ka huna te marama ki muri i tētahi kapua. Kua pōuri katoa te ara whāiti, ā, ka tūtuki ngā waewae o Rona ki ngā pakiaka nunui o ngā rākau. Pupū ana te riri o Rona ki te marama. Ka titiro ia ki runga ki te marama, ka hāmama tōna waha me ana kōrero hahani ki a ia, “Upokokōhua koe, Marama! Tō ngoikore hoki ki te tiaho mai. E mate inu wai ana aku tamariki, engari tē taea e au te ara te kite.”

Kātahi ka riri anō hoki te marama ki a Rona. Whakatopa iho ana, whātoro ana te ringa, ā, mau ana ki a Rona. Ka pāngia a Rona e te matakū. Ka toro tana ringa ki te rākau ngaio i tōna taha, mau pupuri ana, me te karanga atu ki tōna whānau kia haere mai ki te āwhina i a ia. Kāore he aha ki te marama. Ka nui ake tōna riri, ka nui ake hoki tōna kaha. Ahakoa ngā inoi atu a Rona ki te marama me te pupuri ki te rākau ngaio, ka kumea ia, ka wāhia te rākau ngaio, ā, ka tangohia ake a Rona.

Ka haria ake a Rona e te marama ki tōna kāinga i te rangi. Mai i taua wā kei runga a Rona i te marama e noho ana, e mātakitaki iho ana ki tōna kāinga o mua. Nō reira, ki te titiro koe ki runga ki te marama i ngā pō atarau, ka kitea tonutia a Rona, tana tahā me te rākau ngaio hoki.

He Ara Tuhituhi i te Paki Whakamārama Tuku Iho

Ko te ara tuhituhi e whai ake nei hei āwhina i te kaituhi ki te whakarite me te whakatakoto i ngā wāhanga o te tuhinga.



E ono ngā wāhanga o tēnei ara tuhituhi:

1. Te whiriwhiri i te paki
2. Te whakarite i te horopaki o te tuhinga
3. Te whakarite i te anga o te paki

Te whakarite me te tuhituhi i:

4. Te whakatakinga
5. Te raupapatanga mahi
6. Te whakataunga

Kia mahara ake – kia tutuki pai ai te mahi tuhituhi, me matapaki ia wāhanga o te ara e te kaituhi mā tētahi huarahi matapaki.

He Ara Tuhituhi

Te paki whakamārama

- Whiriwhiria te paki
- Whakarongo ki te paki, pānuhia rānei

Te horopaki

Whakaarohia:

1. Te pūtake
2. Ngā kaipānui
3. Te momo tuhinga
4. Te tapanga

Te anga o te paki

- Kohia ōu whakaaro mō te paki
- Whakaritea te anga o te paki ki te mahere
- Tuhia ētahi kupu whakaahua mō te wāhi me ngā kiripuaki, me ētahi kupu e hāngai pū ana ki te paki

Te whakatakinga

- Kohia āu tuhinga mō te whakatakinga i te mahere
- Tuhia te whakatakinga

Te raupapatanga mahi

- Kohia āu tuhinga mō te raupapatanga mahi i te mahere
- Whakaritea ngā tuhinga ki tētahi mahere ripo
- Tuhia te raupapatanga mahi

Te whakataunga

- Kohia āu tuhinga mō te whakataunga i te mahere
- Tuhia te whakataunga

I whai a Manaia i tēnei ara hei tuhituhi i tāna paki whakamārama mō Rona. Tirohia ngā whārangi e whai ake nei.

Te Paki Whakamārama



I tētahi pō i kite a Manaia i tētahi āhua
i roto i te marama. I tipu te hiahia ki a ia ki
te mōhio nā te aha i pērā ai te āhua o te marama.

Nā, ka kōrero ia ki tōna kaiako mō tōna
hiahia, ā, ka kōrero paki atu te kaiako ki ngā
ākonga katoa mō Rona me te marama.

Ihiihi katoa ana a Manaia, ka whakatau
ia ki te tuhituhi i te paki e whakamārama
ana i te āhua e kitea ana i te marama, ā, ka
tīmata tana whakarite.

Te Horopaki



Ko te mahi tuatahi mā te kaituhi, ko te whakaaro ki te horopaki o tāna tuhinga.

Ka whakautu ia i ēnei pātai:

1. He aha te pūtake o te tuhinga?
2. Mā wai te tuhinga?
3. He aha te momo tuhinga?
4. He aha tētahi tapanga mō te tuhinga?

Tirohia ngā whakautu a Manaia ki ngā pātai mō te horopaki o te tuhinga. Ka whiriwhiri ia i tētahi tapanga kia hāngai pū ōna whakaaro ki tāna kaupapa. Ka taea e ia te tīni mēnā he whakaaro atu anō ka puta mai.



- | | |
|----------------------------|--|
| 1. Te pūtake: | He whakamārama i te āhua e kitea ana i te marama |
| 2. Ngā kaipānui: | Ōku hoa mahi |
| 3. Te momo tuhinga: | He paki whakamārama tuku iho |
| 4. Te tapanga: | Rona |

Te Anga o te Paki



Ka huri i nāianeī a Manaia ki te whakarite
i te anga o tāna tuhinga ki te mahere.
Ka whakautu ia i ngā pātai kei ia wāhanga,
ā, ka tuhi hei tuhinga tīpoka.

Te Tapanga: *Rona*

Te Whakamārama

*I whawhai a Rona me te marama,
i tangohia atu a Rona e te marama,
ā, ko tōna āhua tērā e kitea ana i
te marama.*

Te Whakataunga

1. I pēhea te mahi i tau ai?
Ka tangohia a Rona e te marama
2. He aha te āhuetanga i puta mai ki te taiao?
*Ko te āhua o Rona tērā e kitea
ana i te marama*

Te Whakatakinga

1. I nahea te mahi i mahia ai?
I ngā rā o mua, i tētahi pō atarau
2. Ko wai ngā kiripuaki matua?
Rona me te marama
3. He pēhea te āhua o te wāhi?
He papakāinga iti, he manga iti

Tuhia tētahi rerenga tuhituhi e tohu ana
i tētahi tū āhuetanga o te mahi kei te haere.
*Ka haere a Rona ki te manga tiki
wai ai ia rā, ia rā*

Te Raupapatanga Mahi

1. I pēhea te mahi i timata ai?
*Ka oho ngā tamariki
Ka haere a Rona ki te tiki wai
Ka huna te marama*
2. I pēhea te mahi i tipu haere ai ki tōna
teiteitanga?
*I tūtuki a Rona i ōna waewae
Ka riri a Rona ki te marama
Ka whiu kōrero hahani a Rona
Ka riri te marama ki a Rona
Ka whakatopa iho te marama*
3. He aha tōna teiteitanga?
Ka whawhai a Rona me te marama



Kei te whārangi 62 he mahere mā te kaituhi.

Ngā kupu whakaahua

Ka tuhi a Manaia i ētahi kupu hei whakaahua i te āhua o ngā kiripuaki me te wāhi i tū ai te mahi. Tāpiri atu, ka tuhi hoki ia i ētahi kupu e hāngai pū ana ki ētahi o ngā tū āhuatanga o te paki.



Ngā kupu whakaahua

Ngā kiripuaki

Rona

- *wahine, whaea*
- *hiamoe*
- *riri*
- *mataku*

Te marama

- *kaha*
- *riri*

Ngā kupu hāngai ki te paki whakamārama

- *pō atarau*
- *riri, whawhai*
- *'upokokōhua'*
- *ngoikore*
- *tiaho*
- *whakatopa*
- *tahā*
- *rākau ngaio*
- *wāhia*

Te wāhi

- *manga iti, papakāinga*
- *pōuri*
- *whāiti, kōpikopiko te ara*
- *pakiaka nunui*
- *rākau teitei, ātārangi pōuriuri*



Kei te whārangi 63 he mahere mā te kaituhi.

Te Whakatakinga

Ka huri a Manaia i nāiane ki te whakarite i te whakatakinga o tāna tuhinga. Ka hoki anō ia ki āna tuhinga tīpoka mō tēnei wāhanga, kātahi ka tuhi hei rerenga tuhituhi mō te whakatakinga. Tirohia ngā kupu whakaahua kua tohua.

Te Whakatakinga

1. I nahea te mahi i mahia ai?

I ngā rā o mua, i tētahi pō atarau

2. Ko wai ngā kiripuaki matua?

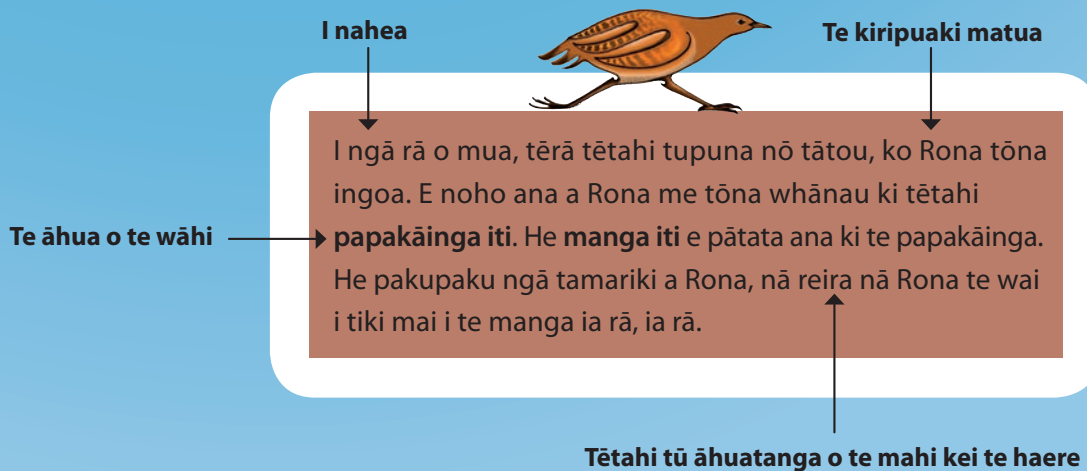
Rona me te marama

3. He pēhea te āhua o te wāhi?

He papakāinga iti, he manga iti

Tuhia tētahi rerenga tuhituhi e tohu ana i tētahi tū āhuratanga o te mahi kei te haere.

Ka haere a Rona ki te manga tiki wai ai ia rā, ia rā



Te Raupapatanga Mahi



Ka huri a Manaia i nāiane i ki te raupapatanga mahi o tōna tuhinga. Ka hoki anō ia ki āna tuhinga tīpoka mō tēnei wāhanga, kātahi ka whakawhānuhia ngā tuhinga, ka whakaraupapahia hoki ki te mahere ripo.

Te Raupapatanga Mahi

1. I pēhea te mahi i tīmata ai?

*Ka oho ngā tamariki
Ka haere a Rona ki
te tiki wai
Ka huna te marama*

2. I pēhea te mahi i tipu haere ai ki tōna teiteitanga?

*I tūtuki a Rona i ōna
wae wae
Ka riri a Rona ki te
marama
Ka whiu kōrero hahani
a Rona
Ka riri te marama ki
a Rona
Ka whakatopa iho te
marama*

3. He aha tōna teiteitanga?

*Ka whawhai a Rona
me te marama*



I pēhea
te mahi i
tīmata ai?

*Ka oho te pēpi me ōna tuākana. Ka karanga
atu rātou ki a Rona kia homai he inu wai.
Ka maranga a Rona, ka haere atu ki te tiki
wai i te manga.*

*Kātahi ka huna te marama ki muri i tētahi
kapua. Ka pōuri katoa te ara whāiti.*

*Ka tūtuki a Rona i ōna wae wae ki tētahi
pakiaka nunui. Ka riria te marama e Rona,
ka whiu kōrero mō tana ngoikore ki te
tiahō mai.*

*Ka riria a Rona e te marama mō ana
kōrero. Ka whakatopa iho te marama ki
te mau i a Rona.*

*Ka whātoro atu te ringa o te marama,
ka mau i a Rona. Ka matakū a Rona, ā,
ka toro ia i tōna ringa ki te rākau ngaio
me te karanga atu ki tōna whānau kia
āwhina i a ia.*

*Ka whawhai a Rona me te marama.
Ka nui ake te riri o te marama, kātahi ka
kumea a Rona e ia. Ka wāhia te rākau
ngaio, ka tangohia ake a Rona.*

I pēhea
te mahi i
tipu haere
ai ki tōna
teiteitanga?

Te teiteitanga →

Kei te whārangi 64 he mahere ripo mā te kaituhi.

Tuhia te raupapatanga mahi

Ka tuhi a Manaia i ngā kōwae e toru mō te raupapatanga mahi: tētahi mō te tīmatanga o te mahi, tētahi mō te tipu o te mahi, me tētahi mō te teiteitanga o te mahi.

Te tīmatanga
o te mahi

I tētahi pō atarau e moe ana a Rona me āna tamariki. Kātahi ka oho te pēpi, ka whakaoho hoki i ōna tuākana. Ka karanga atu rātou ki a Rona kia homai he inu wai. Ahakoa tōna hiamoe, maranga ana a Rona, haere atu ana ki te manga he tahā kei tētahi ringa.

Te tipu
o te mahi

He whāiti, he kōpikopiko te ara mai i te kāinga ki te manga, he rākau teitei kei ngā taha me ngā ātārangi pōuriuri. Engari, i whitingia te ara e te marama, ā, he māmā te haere a Rona. Kātahi ka huna te marama ki muri i tētahi kapua. Kua pōuri katoa te ara whāiti, ā, ka tūtuki ngā waewae o Rona ki ngā pakiaka nunui o ngā rākau. Pupū ana te riri o Rona ki te marama. Ka titiro ia ki runga ki te marama, ka hāmama tōna waha me ana kōrero hahani ki a ia, “Upokokōhua koe, Marama! Tō ngoikore hoki ki te tiaho mai. E mate inu wai ana aku tamariki, engari tē taea e au te ara te kite.”

Te teiteitanga

Kātahi ka riri anō hoki te marama ki a Rona. Whakatopa iho ana ia, whātoro ana te ringa, ā, mau ana ki a Rona. Ka pāngia a Rona e te matakū. Ka toro tana ringa ki te rākau ngaio i tōna taha, mau pupuri ana, me te karanga atu ki tōna whānau kia haere mai ki te āwhina i a ia. Kāore he aha ki te marama. Ka nui ake tōna riri, ka nui ake hoki tōna kaha. Ahakoa ngā inoi atu a Rona ki te marama me te pupuri ki te rākau ngaio, ka kumea ia, ka wāhia te rākau ngaio, ā, ka tangohia ake a Rona.

Te Whakataunga

Ka huri i nāiane i a Manaia ki te tuhi i te whakataunga. Ka hoki anō ia ki āna tuhinga tīpoka mō tēnei wāhanga, kātahi ka tuhi ia hei rerenga tuhituhi mō te whakataunga. Ka āta whakaaro hoki a Manaia ki te pūtake o te paki whakamārama tuku iho hei tuhi i tāna whakataunga.

Te Whakataunga

1. I pēhea te mahi i tau ai?

Ka tangohia a Rona e te marama

2. He aha te āhuatanga i puta mai i te taiao?

Ko te āhua o Rona tērā e kitea ana i te marama

I pēhea te mahi i tau ai?

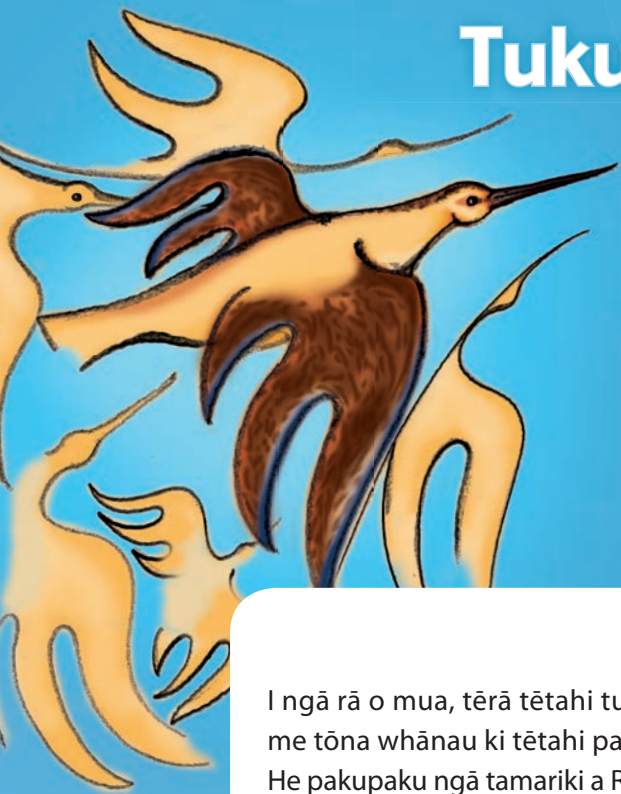


Ka haria ake a Rona e te marama ki tōna kāinga i te rangi. Mai i taua wā kei runga a Rona i te marama e noho ana, e mātakitaki iho ana ki tōna kāinga o mua. Nō reira, ki te titiro koe ki runga ki te marama i ngā pō atarau, ka kitea tonutia a Rona, tana tahā me te rākau ngaio hoki.

He aha te āhuatanga i puta mai ki te taiao?

Ka whakaaro anō a Manaia ki te tapanga. Ki tāna, he pai ake tēnei tapanga – ‘Ka Riro a Rona i te Marama’ – hei kapo i te kaipānui kia pānui tonu.

Te Paki Whakamārama Tuku Iho a Manaia



*Tirohia ngā wāhanga katoa
o te tuhinga a Manaia.*

Ka Riro a Rona i te Marama

I ngā rā o mua, tērā tētahi tupuna nō tātou, ko Rona tōna ingoa. E noho ana a Rona me tōna whānau ki tētahi papakāinga iti. He manga iti e pātata ana ki te papakāinga. He pakupaku ngā tamariki a Rona, nā reira nā Rona te wai i tiki mai i te manga ia rā, ia rā.

I tētahi pō atarau e moe ana a Rona me āna tamariki. Kātahi ka oho te pēpi, ka whakaoho hoki i ōna tuākana. Ka karanga atu rātou ki a Rona kia homai he inu wai. Ahakoa tōna hiamoe, maranga ana a Rona, haere atu ana ki te manga, he tahā kei tētahi ringa.

He whāiti, he kōpikopiko te ara mai i te kāinga ki te manga, he rākau teitei kei ngā taha me ngā ātārangi pōuriuiri. Engari, i whitingia te ara e te marama, ā, he māmā te haere a Rona. Kātahi ka huna te marama ki muri i tētahi kapua. Kua pōuri katoa te ara whāiti, ā, ka tūtuki ngā waewae o Rona ki ngā pakiaka nunui o ngā rākau. Pupū ana te riri o Rona ki te marama. Ka titiro ia ki runga ki te marama, ka hāmama tōna waha me ana kōrero hahani ki a ia, “Upokokōhua koe, Marama! Tō ngoikore hoki ki te tiaho mai. E mate inu wai ana aku tamariki, engari tē taea e au te ara te kite.”

Kātahi ka riri anō hoki te marama ki a Rona. Whakatopa iho ana, whātoro ana te ringa, ā, mau ana ki a Rona. Ka pāngia a Rona e te matakū. Ka toro tana ringa ki te rākau ngaio i tōna taha, mau pupuri ana, me te karanga atu ki tōna whānau kia haere mai ki te āwhina i a ia. Kāore he aha ki te marama. Ka nui ake tōna riri, ka nui ake hoki tōna kaha. Ahakoa ngā inoi atu a Rona ki te marama me te pupuri ki te rākau ngaio, ka kumea ia, ka wāhia te rākau ngaio, ā, ka tangohia ake a Rona.

Ka haria ake a Rona e te marama ki tōna kāinga i te rangi. Mai i taua wā kei runga a Rona i te marama e noho ana, e mātakitaki iho ana ki tōna kāinga o mua. Nō reira, ki te titiro koe ki runga ki te marama i ngā pō atarau, ka kitea tonutia a Rona, tana tahā me te rākau ngaio hoki.

He Taurira Anō

Ko ngā taurira anō hei whakaatu i te whanaketanga o ngā āhuatanga reo, ngā tikanga tuhituhi me ngā kupu mō te paki whakamārama tuku iho.

Ka tirohia te tuhinga, ngā āhuatanga reo me ngā wāhanga o ēnei taurira tuhinga.



He Paki Whakamārama Tuku Iho hei Taurira



He paki tēnei i tuhia e Rangitihī mō ngā rā a Kupe
e iri ana ki tētahi pari i te tai tonga o te Wairarapa.
Nā tōna pōua tēnei paki i tuku iho mai ā-waha ki a ia.

Ngā Rā a Kupe

E ai ki ngā kōrero onamata kua tukuna mai, ko Kupe te tangata tuatahi ki tēnei whenua o Aotearoa. He kaiwhakaterere, he kaitoro rongonui tēnei o ngā tīpuna o ngāi tātou. He tangata autaiā, he tangata pakari, he tangata mōhio hoki ki ngā tū āhuetanga maha o te taiao.

Ka whakanohoa e Kupe tana iwi ki te tai tonga o te Wairarapa, ki te takutai moana e kiia nei ko te Mātakitaki-ā-Kupe. Kei te rohe e kōrerotia nei te maha o ngā kōrero mō Kupe, mō ōna haerenga me āna mahi. Ki tēnei o ngā takiwā he hiwi, he toka, he moana kīkī ana i te maha o ngā momo ika.

Ko Ngake tētahi hoa tata o Kupe, otirā he hoa whakataetae hoki. Kāore i te pērā te rongonui o Ngake i ngā kōrero mō Aotearoa whānui pēnei i a Kupe, heoti anō rā he rangatira, he tangata pakari hoki ia.

Nō tō rāua kaha ki te whakataetae ki a rāua anō, ka puta mai tētahi tautohetohe mō te toa ki te hanga rā mō te waka. I te mea kua whakataetae kē rāua mō te hanga waka, ā, i toa a Kupe, ko te whakapae a Kupe koia kei a ia mō te hanga rā. Ka pērā hoki te whakaponu a Ngake ki a ia anō. Nō runga anō i tēnei, ka whakatū whakataetae rāua ki te hanga rā kia kitea ai ko wai kē te toa.

Ka tīmata tā rāua mahi hanga rā i te ahiahi pō. Ka puku te rae o te tokorua nei ki te hanga tere, me te hanga pai i o rāua ake rā. Ka rākaunui te marama i te ata hāpara, ka oti i a Kupe āna rā te hanga. Engari a Ngake, kāore i oti tae noa ki te atatū rā anō. Ka mutu, ko Kupe te toa.

Ahakoā te hua o te whakataetae, ka noho hūmārie tonu te tokorua nei me ō rāua whānau. Tāria ana te wā, ka whai wāhi anō rāua ki te whakatū whakataetae.

Kei te pari ki te Mātakitaki-ā-Kupe ēnei rā e iri ana. Ko 'Ngā Rā a Kupe' te ingoa tapa ki ēnei rā, ki tērā wāhi o te pari. Ki tō te karu titiro, he toka papa ngā rā e kōrerotia nei, ā, ko te āhua he pēnei me te tapatoru. Ko tētahi a mua o te pari, ko tētahi a muri. Ka kitea tonutia ēnei rā i tēnei wā o tātou. Otirā, tērā pea e rangona tonu ana mai i ngā uri o Kupe rāua ko Ngake te wairua whakataetae, me te wairua hūmārie o ngā tīpuna nei.



Ngā Āhuatanga Reo

Tirohia ngā āhuatanga reo kua whakamahia e Rangitihī i tāna paki whakamārama tuku iho.

Te reo tohu wāmua

E ai ki ngā kōrero onamata
i te ahiahi pō
i te ata hāpara

Te reo raupapa

Kua whakataetae kē
rāua mō te hanga
waka, ā, i toa a Kupe.
Ka mutu
Tāria ana te wā

Te reo whakaahua

He tangata autaia, he
tangata pakari, he
tangata mōhio.
Kīkī ana i te maha
o ngā momo ika.
He pēnei me te
tapatoru te hanga.

Te reo tūhono i te take me te pānga

Nō tō rāua kaha
Nō runga anō i tēnei

Te kiwaha

Koia kei a ia.

Ngā Rā a Kupe

E ai ki ngā kōrero onamata kua tukuna mai, ko Kupe te tangata tuatahi ki tēnei whenua o Aotearoa. He kaiwhakatere, he kaitoro rongonui tēnei o ngā tīpuna o ngāi tātou. He tangata autaia, he tangata pakari, he tangata mōhio hoki ki ngā tū āhuatanga maha o te taiao.

Ka whakanohoa e Kupe tana iwi ki te tai tonga o te Wairarapa, ki te takutai moana e kīia nei ko te Mātakitaki-ā-Kupe. Kei te rohe e kōrerotia nei te maha o ngā kōrero mō Kupe, mō ōna haerenga me āna mahi. Ki tēnei o ngā takiwā he hiwi, he toka, he moana kīkī ana i te maha o ngā momo ika.

Ko Ngake tētahi hoa tata o Kupe, otirā he hoa whakataetae hoki. Kāore i te pērā te rongonui o Ngake i ngā kōrero mō Aotearoa whānui pēnei i a Kupe, heoti anō rā he rangatira, he tangata pakari hoki ia.

Nō tō rāua kaha ki te whakataetae ki a rāua anō, ka puta mai tētahi tautohetohe mō te toa ki te hanga rā mō te waka. I te mea kua whakataetae kē rāua mō te hanga waka, ā, i toa a Kupe, ko te whakapae a Kupe koia kei a ia mō te hanga rā. Ka pērā hoki te whakapono a Ngake ki a ia anō. Nō runga anō i tēnei, ka whakatū whakataetae rāua ki te hanga rā kia kitea ai ko wai kē te toa.

Ka tīmata tā rāua mahi hanga rā i te ahiahi pō. Ka puku te rae o te tokorua nei ki te hanga tere, me te hanga pai i o rāua ake rā. Ka rākaunui te marama i te ata hāpara, ka oti i a Kupe āna rā te hanga. Engari a Ngake, kāore i oti tae noa ki te atatū rā anō. Ka mutu, ko Kupe te toa.

Ahakoia te hua o te whakataetae, ka noho hūmārie tonu te tokorua nei me ō rāua whānau. Tāria ana te wā, ka whai wāhi anō rāua ki te whakatū whakataetae.

Kei te pari ki te Mātakitaki-ā-Kupe ēnei rā e iri ana. Ko 'Ngā Rā a Kupe' te ingoa tapa ki ēnei rā, ki tērā wāhi o te pari. Ki tō te karu titiro, he toka papa ngā rā e kōrerotia nei, ā, ko te āhua he pēnei me te tapatoru. Ko tētahi a mua o te pari, ko tētahi a muri. Ka kitea tonutia ēnei rā i tēnei wā o tātou. Otirā, tērā pea e rangona tonu ana mai i ngā uri o Kupe rāua ko Ngake te wairua whakataetae, me te wairua hūmārie o ngā tīpuna nei.

Tirohia te whārangi 11 mō te whakamāramatanga o ēnei āhuatanga reo.



Ngā Wāhanga

Tirohia ngā wāhanga e whā o te paki whakamārama tuku iho a Rangitahi.

Te tapanga

Ngā Rā a Kupe

E ai ki ngā kōrero onamata kua tukuna mai, ko Kupe te tangata tuatahi ki tēnei whenua o Aotearoa. He kaiwhakatere, he kaitoro rongonui tēnei o ngā tīpuna o ngāi tātou. He tangata autaiā, he tangata pakari, he tangata mōhio hoki ki ngā tū āhuatanga maha o te taiao.

Te whakatakinga

Ka whakanohoa e Kupe tana iwi ki te tai tonga o te Wairarapa, ki te takutai moana e kīia nei ko te Mātakitaki-ā-Kupe. Kei te rohe e kōrerotia nei te maha o ngā kōrero mō Kupe, mō ōna haerenga me āna mahi. Ki tēnei o ngā takiwā he hiwi, he toka, he moana kīkī ana i te maha o ngā momo ika.

Ko Ngake tētahi hoa tata o Kupe, otirā he hoa whakataetae hoki. Kāore i te pērā te rongonui o Ngake i ngā kōrero mō Aotearoa whānui pēnei i a Kupe, heoti anō rā he rangatira, he tangata pakari hoki ia.

Te raupapatanga mahi

Nō tō rāua kaha ki te whakataetae ki a rāua anō, ka puta mai tētahi tautohetohe mō te toa ki te hanga rā mō te waka. I te mea kua whakataetae kē rāua mō te hanga waka, ā, i toa a Kupe, ko te whakapae a Kupe koia kei a ia mō te hanga rā. Ka pērā hoki te whakapono a Ngake ki a ia anō. Nō runga anō i tēnei, ka whakatū whakataetae rāua ki te hanga rā kia kitea ai ko wai kē te toa.

Ka tīmata tā rāua mahi hanga rā i te ahiahi pō. Ka puku te rae o te tokorua nei ki te hanga tere, me te hanga pai i o rāua ake rā. Ka rākaunui te marama i te ata hāpara, ka oti i a Kupe āna rā te hanga. Engari a Ngake, kāore i oti tae noa ki te atatū rā anō. Ka mutu, ko Kupe te toa.

Te whakataunga

Ahakoā te hua o te whakataetae, ka noho hūmārie tonu te tokorua nei me ō rāua whānau. Tāria ana te wā, ka whai wāhi anō rāua ki te whakatū whakataetae.

Kei te pari ki te Mātakitaki-ā-Kupe ēnei rā e iri ana. Ko 'Ngā Rā a Kupe' te ingoa tapa ki ēnei rā, ki tērā wāhi o te pari. Ki tō te karu titiro, he toka papa ngā rā e kōrerotia nei, ā, ko te āhua he pēnei me te tapatoru. Ko tētahi a mua o te pari, ko tētahi a muri. Ka kitea tonutia ēnei rā i tēnei wā o tātou. Otirā, tērā pea e rangona tonu ana mai i ngā uri o Kupe rāua ko Ngake te wairua whakataetae, me te wairua hūmārie o ngā tīpuna nei.

Tirohia te whārangi 14 mō te whakamāramatanga o ngā wāhanga.

He Paki Whakamārama Tuku Iho hei Taurira



*Ko Māui-tikitiki-a-Taranga te tino tipuna ki a Beth.
Kua rangona e Beth ngā kōrero maha mōna. Heoi,
ko te paki tino mīharo rawa atu ki a ia ko tērā i kōrerotia
mai e tōna kaiako mō te hīnga ake o tō tātou whenua.
Nō runga i tērā, ka tuhi ia i te paki nei.*

Te Ika a Māui

Tērā tētahi tipuna e kiia ana he tangata, he atua. Ko Māui tōna ingoa. Noho ai rātou ko tōna whānau i tētahi motu o te moana nui. Ko Māui te pōtiki o te whānau, ā, kāore ōna tuākana e aro atu ki a ia.

I tētahi rangi ka rongoa ia i ōna tuākana e kōrero ana mō tētahi haerenga ki te moana ki te hī ika. I te tino hiahia a Māui ki te haere, engari kāore ōna tuākana i whakaae. I te atatū tonu ka wehe atu ngā tuākana me ā rātou aho ki te au moana. Kāore rātou i mōhio i te huna a Māui i raro i ngā kupenga i roto i te waka. I a ia hoki te kauae o tōna tipuna, o Muri-ranga-whenua.

Nāwai rā, i tae atu ki te tauranga ika e mōhio ana e ngā tuākana. Ohore katoa te hunga nei me te wehi hoki i te putanga ake o Māui i raro i ngā kupenga. “Hoea! Hoea!” tana whakahau. “Kaua e tukuna ngā aho i konei. Karawhiua ngā hoe! Karawhiua!” Nā te kaha ohore o ngā tuākana, pūrere ana ngā huka o te moana i te ngau a ngā hoe. Ahakoa te roa o te hoe, te nenge o te tinana, i hoe tonu ngā tuākana. He pō, he ao, kātahi anō ka tae atu. “Koinei. Tukuna ngā aho i konei,” te kī a Māui.

Nā te kaha pūhaehae, me te riri hoki ki tō rātou taina, kāore ngā tuākana i hoatu mōunu mā Māui. Hei aha hoki ki a Māui, mekea ana e ia tana ihu kia toto, kātahi ka pania ki te kauae o tōna tipuna. Koinei te matau hī a Māui. Ka tukuna kia rere ki te moana pōuriuri.

Nāwai rā, rangona ana tētahi ngau i tana aho. Ka tukua e Māui ngā karakia e tika ana. Ka kukume, ka hautō, ka tō ake. I a ia e hautō ana, i noho piri tata ngā tuākana i tō rātou wehi. Ka kaha ake te whawhai a te ika, ka kaha ake te karakia me te kukume a Māui. Ehara, rewa ake ana he ika nui, he ika roa, he tipua.

Mōhio tonu a Māui me haere ia ki te tūāhu o tōna tipuna, o Muri-ranga-whenua. “Kaua tētahi e whāwhā i te ika nei,” tana ki ōna tuākana. “Kia hoki mai ahau ka wehewehe ai.” Tē aro atu ngā tuākana. Haehaetia kētia ana e rātou te ika ki ā rātou hoe.

Ā, nō te hokinga mai o Māui ka rongoa ngā tuākana i tōna riri, kātahi ka mutu tō rātou mahi haehae. Heoi, nā tēnei mahi tūkinō ka puta ko ngā whāruarua, ko ngā raorao, ko ngā pae maunga, ko ngā puia o te whenua nei. Kai te raki ko te hiku o te ika nei, kai te tonga ko tōna upoko. Tae mai ki nāiane ki tētahi o ngā ingoa taketake o te motu nei ko Te Ika a Māui.

Ngā Āhuatanga Reo

Tirohia ngā āhuatanga reo kua whakamahia e Beth i tāna paki whakamārama tuku iho.



Te reo tohu wāmua

Tērā tētahi tipuna
I tētahi rangi
I te atatū tonu

Te reo raupapa

Nāwai rā
He pō, he ao
Kātahi anō ka...

Te whakawhiti kōrero

“Hoea! Hoea!”
“Kaua e tukuna ngā
aho i konei. Karawhiua
ngā hoe! Karawhiua!”
“Koinei. Tukuna ngā
aho i konei”

Te reo whakaahua

Ka kukume, ka hautō,
ka tō ake.
He ika nui, he ika roa,
he tipua.
Moana pōuriuri.

Te reo tūhono i te take me te pānga

Nā te kaha pūhaehae,
me te riri hoki ki tō
rātou taina, kāore ngā
tuākana i hoatu
mōunu mā Māui.
Heoi, nā tēnei mahi
tūkinu ka puta ko ngā
whāruarua...

Te Ika a Māui

Tērā tētahi tipuna e kīia ana he tangata, he atua. Ko Māui tōna ingoa. Noho ai rātou ko tōna whānau i tētahi motu o te moana nui. Ko Māui te pōtiki o te whānau, ā, kāore ōna tuākana e aro atu ki a ia.

I tētahi rangi ka rongu ia i ōna tuākana e kōrero ana mō tētahi haerenga ki te moana ki te hī ika. I te tino hiahia a Māui ki te haere, engari kāore ōna tuākana i whakaae. I te atatū tonu ka wehe atu ngā tuākana me ā rātou aho ki te au moana. Kāore rātou i mōhio i te huna a Māui i raro i ngā kupenga i roto i te waka. I a ia hoki te kauae o tōna tipuna, o Muri-ranga-whenua.

Nāwai rā, i tae atu ki te tauranga ika e mōhioia ana e ngā tuākana. Ohore katoa te hunga nei me te wehi hoki i te putanga ake o Māui i raro i ngā kupenga. “Hoea! Hoea!” tana whakahau. “Kaua e tukuna ngā aho i konei. Karawhiua ngā hoe! Karawhiua!” Nā te kaha ohore o ngā tuākana, pūrere ana ngā huka o te moana i te ngau a ngā hoe. Ahakoa te roa o te hoe, te ngenge o te tinana, i hoe tonu ngā tuākana. He pō, he ao, kātahi anō ka tae atu. “Koinei. Tukuna ngā aho i konei,” te kī a Māui.

Nā te kaha pūhaehae, me te riri hoki ki tō rātou taina, kāore ngā tuākana i hoatu mōunu mā Māui. Hei aha hoki ki a Māui, mekea ana e ia tana ihu kia toto, kātahi ka pania ki te kauae o tōna tipuna. Koinei te matau hī a Māui. Ka tukuna kia rere ki te moana pōuriuri.

Nāwai rā, rangona ana tētahi ngau i tana aho. Ka tukua e Māui ngā karakia e tika ana. Ka kukume, ka hautō, ka tō ake. I a ia e hautō ana, i noho piri tata ngā tuākana i tō rātou wehi. Ka kaha ake te whawhai a te ika, ka kaha ake te karakia me te kukume a Māui. Ehara, rewa ake ana he ika nui, he ika roa, he tipua.

Mōhio tonu a Māui me haere ia ki te tūāhu o tōna tipuna, o Muri-ranga-whenua. “Kaua tētahi e whāwhā i te ika nei,” tāna ki ōna tuākana. “Kia hoki mai ahau ka wehewehe ai.” Tē aro atu ngā tuākana. Haehaetia kētia ana e rātou te ika ki ā rātou hoe.

Ā, nō te hokinga mai o Māui ka rongu ngā tuākana i tōna riri, kātahi ka mutu tō rātou mahi haehae. Heoi, nā tēnei mahi tūkinu ka puta ko ngā whāruarua, ko ngā raorao, ko ngā pae maunga, ko ngā puia o te whenua nei. Kai te raki ko te hiku o te ika nei, kai te tonga ko tōna upoko. Tae mai ki nāiane ki tētahi o ngā ingoa taketake o te motu nei ko Te Ika a Māui.

Tirohia te whārangi 11 mō te whakamāramatanga o ēnei āhuatanga reo.

Ngā Wāhanga

Tirohia ngā wāhanga e whā o te paki whakamārama tuku iho a Beth.

Te tapanga

Te Ika a Māui

Te whakatakinga

Tērā tētahi tipuna e kīia ana he tangata, he atua. Ko Māui tōna ingoa. Noho ai rātou ko tōna whānau i tētahi motu o te moana nui. Ko Māui te pōtiki o te whānau, ā, kāore ōna tuākana e aro atu ki a ia.

Te raupapatanga mahi

I tētahi rangi ka rongohia ia i ōna tuākana e kōrero ana mō tētahi haerenga ki te moana ki te hī ika. I te tino hiahia a Māui ki te haere, engari kāore ōna tuākana i whakaae. I te atatū tonu ka wehe atu ngā tuākana me ā rātou aho ki te au moana. Kāore rātou i mōhio i te huna a Māui i raro i ngā kupenga i roto i te waka. I a ia hoki te kauae o tōna tipuna, o Muri-ranga-whenua.

Nāwai rā, i tae atu ki te tauranga ika e mōhiohia ana e ngā tuākana. Ohorere katoa te hunga nei me te wehi hoki i te putanga ake o Māui i raro i ngā kupenga. “Hoea! Hoea!” tana whakahau. “Kaua e tukuna ngā aho i konei. Karawhiua ngā hoe! Karawhiua!” Nā te kaha ohorere o ngā tuākana, pūrere ana ngā huka o te moana i te ngau a ngā hoe. Ahakoa te roa o te hoe, te nenge o te tinana, i hoe tonu ngā tuākana. He pō, he ao, kātahi anō ka tae atu. “Koinei. Tukuna ngā aho i konei,” te kī a Māui.

Nā te kaha pūhaehae, me te riri hoki ki tō rātou taina, kāore ngā tuākana i hoatu mōunu mā Māui. Hei aha hoki ki a Māui, mekea ana e ia tana ihu kia toto, kātahi ka pania ki te kauae o tōna tipuna. Koinei te matau hī a Māui. Ka tukuna kia rere ki te moana pōuriuri.

Nāwai rā, rangona ana tētahi ngau i tana aho. Ka tukua e Māui ngā karakia e tika ana. Ka kukume, ka hautō, ka tō ake. I a ia e hautō ana, i noho piri tata ngā tuākana i tō rātou wehi. Ka kaha ake te whawhai a te ika, ka kaha ake te karakia me te kukume a Māui. Ehara, rewa ake ana he ika nui, he ika roa, he tipua.

Mōhio tonu a Māui me haere ia ki te tūāhu o tōna tipuna, o Muri-ranga-whenua. “Kaua tētahi e whāwhā i te ika nei,” tāna ki ōna tuākana. “Kia hoki mai ahau ka wehewehe ai.” Tē aro atu ngā tuākana. Haehaetia kētia ana e rātou te ika ki ā rātou hoe.

Te whakataunga

Ā, nō te hokinga mai o Māui ka rongohia ngā tuākana i tōna riri, kātahi ka mutu tō rātou mahi haehae. Heoi, nā tēnei mahi tūkinohia ka puta ko ngā whārua, ko ngā raorao, ko ngā pae maunga, ko ngā puia o te whenua nei. Kai te raki ko te hiku o te ika nei, kai te tonga ko tōna upoko. Tae mai ki nāianei ko tētahi o ngā ingoa taketake o te motu nei ko Te Ika a Māui.

Tirohia te whārangi 14 mō te whakamāramatanga o ngā wāhanga.

Te Paki Whakamārama Pohewa

Te Pūtake

Ko te paki whakamārama pohewa he paki e whakamārama ana ki tā te kaituhi whakaaro pohewa i tētahi āhuatanga o te taiao.



He Paki Whakamārama Pohewa hei Taurira



Ka whakaatu au i te paki whakamārama pohewa kua tuhia e Rereao mō te kūaka.

Ka whakaaturia:

- Ngā āhuatanga reo
- Ngā wāhanga
- Te ara tuhituhi i whāia e Rereao

Tirohia tāna tuhinga:

Kūaka Rerenga Roa

I te wā o taku paopaotanga mai, kāore taku iwi i rere atu ki whenua kē ia ngahuru, ka noho kē ki Aotearoa. Noho ai mātou i ngā ngutuawa mō ngā wāhanga e whā o te tau. Ahakoa tērā, he kaha mātou ki te rere pāmamao atu, ā, he nui tō mātou mana i waenganui i ngā manu waitai katoa. I taua wā o taku tamarikitanga, he huhua ngā kai o ngā motu nei, he haumarua hoki ngā motu mō ngā manu katoa, i te mea he torutoru noa iho ngā kaikokiko manu.

Heoi, i tētahi ahiahi pō, i a mātou ko aku whanaunga e tākaro ana i te onepū, ka puta ohore mai tētahi mea, he ōrite ki te rākau nui, e rere ana i runga i te moana, ā, ka aro mai ki uta. I tō mātou kitenga atu i ngā koiora tino rerekē e noho ana i runga i te rākau, ka nui tō mātou pākiki me te matakū hoki. Ka huna mātou me te mātakitaki i a rātou e heke ana ki uta.

“He aha rā tērā momo koiora?” tō mātou pātai ki a mātou anō. “He mea roa pērā i te moa, e rua ngā waewae pēnei i te manu, engari kāore ō rātou huruhuru, kāore hoki he parirau.” Ka māharahara mātou, “Ka aha ngā tauhou rā i konei?”

Auē! Kāore i roa, kua māmara mātou ki te mahi a te iwi tauhou. He iwi kaimanu rātou! Ka nui te matakū o ngā manu katoa. Taro ake nei, kua mate te katoa o ētahi whānau manu, kua tīmata te noho huna a ētahi atu. Nā tēnā ka whakatūria he hui mō ngā manu katoa hei kimi huarahi mō te oranga.

Ka hui ngā momo manu katoa i te wāhi huna. Ka rangona atu ngā kīrea, ngā kekē me ngā kūkū. “Me aha tātou?” te tangi a ētahi. “Kei mate katoa tātou!” Ka tū ngā rangatira o ia whānau manu ki te kōrero atu ki te minenga. I te mea he rerekē te oranga o tēnā manu, o tēnā manu, kāore he whakataunga kotahi. Otirā, me tīni ngā whanonga o ia manu, o ia manu. Ki te kore e tīni, ka mate noa atu.

“Kia mau, kia mau, e hoa mā!” tā te rangatira o te rōpū kaumātua o ngā kūaka, “Anei te whakataunga mō mātou, mō ngā kūaka. Mā tō mātou kaha ki te rere ki tawhiti, ka ora ngā uri whakatipu. Ka kimihia he whenua pāmamao, he whenua haumarua ki reira whakawhānau ai i ngā pipī. Otirā, kia mōhio ai ngā uri ki tō mātou kāinga tūturu, ia tau ka hoki mātou ki Aotearoa mō te kōanga me te raumati.”

Nā reira, mai i taua wā, ia tau, ia tau i te kōanga ka hoki mai mātou ki Aotearoa mō te wā mahana o te tau, ā, i te ngahuru ka hoki atu ngā kāhui kūaka ki te whenua pāmamao whakawhānau ai i te whakatipuranga hou.

Ngā Āhuatanga Reo o te Paki Whakamārama Pohewa

*Ka tirohia ētahi o ngā āhuatanga reo
o te paki whakamārama pohewa:*

- Te reo tohu wāmua
- Te reo tautahi
- Te reo tohu i te mahi a tētahi atu
(te reo tautoru)
- Te reo raupapa
- Te whakawhiti kōrero
- Te reo whakaahua
- Te reo tūhono i te take me te pānga
- Te kīwaha

Tirohia te whārangi e whai ake nei.



Te Whakamāramatanga o ngā Āhuatanga Reo

Te reo tohu wāmua

Ko tā tēnei reo he **tohu i te wā i mahia ai tētahi mahi**.

Hei tauira:

I **te wā o taku paopaoatanga mai**, kāore taku iwi i rere atu ki whenua kē ia ngahuru, ka noho kē ki Aotearoa.

Te reo tautahi

Ka tuhia ētahi paki pohewa **nō te tirohanga tautahi**, ānō nei kei roto te kaituhi i te paki.

Hei tauira:

I te wā o **taku** paopaoatanga mai, kāore **taku** iwi i rere atu ki whenua kē ia ngahuru, ka noho kē ki Aotearoa. Noho ai **mātou** i ngā ngutuawa mō ngā wāhanga e whā o te tau.

Te reo tohu i te mahi a tētahi atu (te reo tautoru)

Ka tuhia ētahi atu paki pohewa, **ānō nei e mātakitaki ana te kaituhi i ngā kiripuaki i a rātou e mahi ana**.

Hei tauira:

Nāwai rā, ka kaha ake te tangi hotuhotu a **Hineākau**. Ka tipu te hōhā ki **ōna** hoa tata me **ōna** whanaunga i te rongo atu i **tana** tangi hotuhotu. Ka hāparangi iho a Marama ki a **ia**, “E hoa, Hineākau, he aha te raruraru? Kei te hōhā haere mātou i a koe e tangi nā.”

Te reo raupapa

Ko tā tēnei reo he tohu kei te whai mai tētahi āhuatanga i tētahi, **kia mārama te raupapa o ngā mahi**.

Hei tauira:

Kāore i roa, kua mārama te mahi a ngā tauhou.

Taro ake nei, kua mate te katoa o ētahi whānau manu.

Te whakawhiti kōrero

Ko te whakawhiti kōrero, ko **ngā kupu i kōrerotia ai e ngā kiripuaki**. Mā te whakawhiti kōrero ka mōhiotia te tuakiri o te kiripuaki, **ōna tino whakaaro, ōna kare-ā-roto hoki**.

Hei tauira:

“**Me aha tātou?**”, te tangi a ētahi. “**Kei mate katoa tātou!**”

Te reo whakaahua

Mā te reo whakaahua, arā, mā te āta whiriwhiri i **ngā kupu hei whakaahua i te wāhi, i te āhua o ngā kiripuaki, i te mahi a ngā kiripuaki me ō rātou kare-ā-roto**, ka ‘tuhia he whakaahua’ hei whakawana, hei whakaoho, hei whakauru i te kaipānui ki te paki.

Hei tauira:

I te wā o **taku paopaotanga mai**, kāore taku iwi i rere atu ki whenua kē ia ngahuru, ka noho mai kē ki Aotearoa.

Ka rangona atu ngā **kīrea**, ngā **kekē** me ngā **kūkū**.

I tō mātou kitenga atu i ngā koiora tino rerekē e noho ana i runga i te rākau, ka nui **tō mātou pākiki me te matakū** hoki.

Te reo tūhono i te take me te pānga

Ko tā tēnei reo he tohu i **te tūhonotanga o tētahi āhuatanga me te take i puta ai taua āhuatanga**.

Hei tauira:

Nā tēnā ka whakatūria he hui mō ngā manu katoa hei kimi huarahi mō te oranga.

Te kīwaha

Ko tā te kīwaha he **whakamārama i tētahi āhuatanga kē**. He momo kōrero hei whakanui, hei whakaiti rānei i ngā kōrero kua kōrerotia kētia, ā, i ngā kōrero hoki kei te haere. He momo kīnaki. Ka kitea ngā kīwaha i ētahi o ngā whakawhiti kōrero a ngā kiripuaki, i ō rātou whakaaro rānei.

Hei tauira:

“**Kia mau, kia mau**, e hoa mā!”



Tirohia ngā āhuatanga reo kua whakamahia e Rereao i tāna paki whakamārama pohewa.

Te reo tohu wāmua

I te wā o taku paopaotanga mai I tētahi ahiahi pō

Te reo tautahi

Ahakoā tērā, he kaha mātou ki te rere pāmamao atu, ā, he nui tō mātou mana i waenganui i ngā manu waitai katoa.

Te reo raupapa

Kāore i roa Taro ake nei

Te whakawhiti kōrero

Te reo whakaahua

Taku paopaotanga mai Ka nui tō mātou pākiki me te matakū hoki Ka rangona atu ngā kīrea, ngā kekē me ngā kūkū.

Te reo tūhono i te take me te pānga

Mā tō mātou kaha ki te rere ki tawhiti, ka ora ngā uri.

Te kiwaha

“Kia mau, kia mau, e hoa mā!”

Kūaka Rerenga Roa

I te wā o taku paopaotanga mai, kāore taku iwi i rere atu ki whenua kē ia ngahuru, ka noho kē ki Aotearoa. Noho ai mātou i ngā ngutuawa mō ngā wāhanga e whā o te tau. Ahakoā tērā, he kaha mātou ki te rere pāmamao atu, ā, he nui tō mātou mana i waenganui i ngā manu waitai katoa. I taua wā o taku tamarikitanga, he huhua ngā kai o ngā motu nei, he haumarū hoki ngā motu mō ngā manu katoa, i te mea he torutoru noa iho ngā kaikikokiko manu.

Heoi, i tētahi ahiahi pō, i a mātou ko aku whanaunga e tākaro ana i te onepū, ka puta ohore mai tētahi mea, he ōrite ki te rākau nui, e rere ana i runga i te moana, ā, ka aro mai ki uta. I tō mātou kitenga atu i ngā koirora tino rerekē e noho ana i runga i te rākau, ka nui tō mātou pākiki me te matakū hoki. Ka huna mātou me te mātakitaki i a rātou e heke ana ki uta.

“He aha rā tērā momo koirora?” tō mātou pātai ki a mātou anō. “He mea roa pērā i te moa, e rua ngā waewae pēnei i te manu, engari kāore ō rātou huruhuru, kāore hoki he parirau.” Ka māharahara mātou, “Ka aha ngā tauhou rā i konei?”

Auē! Kāore i roa, kua māmama mātou ki te mahi a te iwi tauhou. He iwi kaimanu rātou! Ka nui te matakū o ngā manu katoa. Taro ake nei, kua mate te katoa o ētahi whānau manu, kua tīmata te noho huna a ētahi atu. Nā tēnā ka whakatūria he hui mō ngā manu katoa hei kimi huarahi mō te oranga.

Ka hui ngā momo manu katoa i te wāhi huna. Ka rangona atu ngā kīrea, ngā kekē me ngā kūkū. “Me aha tātou?” te tangi a ētahi. “Kei mate katoa tātou!” Ka tū ngā rangatira o ia whānau manu ki te kōrero atu ki te minenga. I te mea he rerekē te oranga o tēnā manu, o tēnā manu, kāore he whakataunga kotahi. Otirā, me tīni ngā whanonga o ia manu, o ia manu. Ki te kore e tīni, ka mate noa atu.

“Kia mau, kia mau, e hoa mā!” tā te rangatira o te rōpū kaumātua o ngā kūaka, “Anei te whakataunga mō mātou, mō nga kūaka. Mā tō mātou kaha ki te rere ki tawhiti, ka ora ngā uri whakatipu. Ka kimihia he whenua pāmamao, he whenua haumarū ki reira whakawhānau ai i ngā pīpī. Otirā, kia mōhio ai ngā uri ki tō mātou kāinga tūturu, ia tau ka hoki mātou ki Aotearoa mō te kōanga me te raumati.”

Nā reira, mai i taua wā, ia tau, ia tau i te kōanga ka hoki mai mātou ki Aotearoa mō te wā mahana o te tau, ā, i te ngahuru ka hoki atu ngā kāhui kūaka ki te whenua pāmamao whakawhānau ai i te whakatipuranga hou.

Ngā Wāhanga o te Paki Whakamārama Pohewa



E whā ngā wāhanga o te paki whakamārama pohewa:

1. Te tapanga
2. Te whakatakinga
3. Te raupapatanga mahi
4. Te whakataunga

Tirohia te whārangi e whai ake nei.

Te Whakamāramatanga o ngā Wāhanga

Te tapanga

Hei tāutu i te kaupapa o te paki, ā, hei kapo hoki i te kaipānui
kia pānui tonu.

Te whakatakinga

Hei whakamōhio atu ki te kaipānui i te whakatakinga o te paki.

Ka whakautua ēnei pātai:

1. I nahea te mahi i mahia ai?
2. Ko wai ngā kiripuaki?
3. He pēhea te āhua o te wāhi?

Ka tuhia hoki:

Tētahi rerenga tuhituhi e tohu ana i tētahi tū āhuetanga o te
mahi kei te haere.

Te raupapatanga mahi

Hei whakamōhio atu ki te kaipānui i te raupapa o te mahi.

Ka whakautua ēnei pātai:

1. I pēhea te mahi i tīmata ai?
2. I pēhea te mahi i tipu haere ai ki tōna teiteitanga?
3. He aha tōna teiteitanga?

Te whakataunga

Hei whakamōhio atu ki te kaipānui i te whakataunga o te mahi.

Ka whakautua ēnei pātai:

1. I pēhea te mahi i tau ai?
2. He aha te āhuetanga i puta mai ki te taiao?



Tirohia ngā wāhanga e whā o te paki whakamārama pohewa a Rereao.

Te tapanga

Kūaka Rerenga Roa

Te whakatakinga

I te wā o taku paopaotanga mai, kāore taku iwi i rere atu ki whenua kē ia ngahuru, ka noho kē ki Aotearoa. Noho ai mātou i ngā ngutuawa mō ngā wāhanga e whā o te tau. Ahakoa tērā, he kaha mātou ki te rere pāmamao atu, ā, he nui tō mātou mana i waenganui i ngā manu waitai katoa. I taua wā o taku tamarikitanga, he huhua ngā kai o ngā motu nei, he haumarū hoki ngā motu mō ngā manu katoa, i te mea he torutoru noa iho ngā kaikikokiko manu.

Te raupapatanga mahi

Heoi, i tētahi ahiahi pō, i a mātou ko aku whanaunga e tākaro ana i te onepū, ka puta ohore mai tētahi mea, he ōrite ki te rākau nui, e rere ana i runga i te moana, ā, ka aro mai ki uta. I tō mātou kitenga atu i ngā koiara tino rerekē e noho ana i runga i te rākau, ka nui tō mātou pākiki me te matakū hoki. Ka huna mātou me te mātakitaki i a rātou e heke ana ki uta.

“He aha rā tērā momo koiara?” tō mātou pātai ki a mātou anō. “He mea roa pērā i te moa, e rua ngā waewae pēnei i te manu, engari kāore ō rātou huruhuru, kāore hoki he parirau.” Ka māharahara mātou, “Ka aha ngā tauhou rā i konei?”

Auē! Kāore i roa, kua mārama mātou ki te mahi a te iwi tauhou. He iwi kaimanu rātou! Ka nui te matakū o ngā manu katoa. Taro ake nei, kua mate te katoa o ētahi whānau manu, kua tīmata te noho huna a ētahi atu. Nā tēnā ka whakatūria he hui mō ngā manu katoa hei kimi huarahi mō te oranga.

Ka hui ngā momo manu katoa i te wāhi huna. Ka rangona atu ngā kīrea, ngā kekē me ngā kūkū. “Me aha tātou?” te tangi a ētahi. “Kei mate katoa tātou!” Ka tū ngā rangatira o ia whānau manu ki te kōrero atu ki te minenga. I te mea he rerekē te oranga o tēnā manu, o tēnā manu, kāore he whakataunga kotahi. Otirā, me tīni ngā whanonga o ia manu, o ia manu. Ki te kore e tīni, ka mate noa atu.

Te whakataunga

“Kia mau, kia mau, e hoa mā!” tā te rangatira o te rōpū kaumātua o ngā kūaka, “Anei te whakataunga mō mātou, mō nga kūaka. Mā tō mātou kaha ki te rere ki tawhiti, ka ora ngā uri whakatipu. Ka kimihia he whenua pāmamao, he whenua haumarū ki reira whakawhānau ai i ngā pīpī. Otirā, kia mōhio ai ngā uri ki tō mātou kāinga tūturu, ia tau ka hoki mātou ki Aotearoa mō te kōanga me te raumati.”

Nā reira, mai i taua wā, ia tau, ia tau i te kōanga ka hoki mai mātou ki Aotearoa mō te wā mahana o te tau, ā, i te ngahuru ka hoki atu ngā kāhui kūaka ki te whenua pāmamao whakawhānau ai i te whakatipuranga hou.

He Ara Tuhituhi i te Paki Whakamārama Pohewa

*Ko te ara tuhituhi e whai ake nei hei āwhina i te kaituhi
ki te whakarite me te whakatakoto i ngā wāhanga o te tuhinga.*



E ono ngā wāhanga o tēnei ara tuhituhi:

1. Te whiriwhiri i te āhuatanga hei whakamārama
2. Te whakarite i te horopaki o te tuhinga
3. Te whakarite i te anga o te paki

Te whakarite me te tuhituhi i:

4. Te whakatakinga
5. Te raupapatanga mahi
6. Te whakataunga

*Kia mahara ake – kia tutuki pai ai te mahi tuhituhi,
me matapaki ia wāhanga o te ara e te kaituhi mā tētahi
huarahi matapaki.*

He Ara Tuhituhi

Te paki whakamārama

- Whiriwhiria tētahi āhuatanga o te taiao hei whakamārama
- Tuhia tētahi whakamārama iti

Te horopaki

Whakaarohia:

1. Te pūtake
2. Ngā kaipānui
3. Te momo tuhinga
4. Te tapanga

Te anga o te paki

- Kohia ōu whakaaro mō te āhuatanga kua whiriwhiria
- Whakaritea ngā wāhanga o te paki ki te mahere
- Tuhia ētahi kupu whakaahua mō te wāhi me ngā kiripuaki, me ētahi kupu e hāngai pū ana ki te paki

Te whakatakinga

- Kohia āu tuhinga mō te whakatakinga i te mahere
- Tuhia te whakatakinga

Te raupapatanga mahi

- Kohia āu tuhinga mō te raupapatanga mahi i te mahere
- Whakaritea ngā tuhinga ki tētahi mahere ripo
- Tuhia te raupapatanga mahi

Te whakataunga

- Kohia āu tuhinga mō te whakataunga i te mahere
- Tuhia te whakataunga

I whai a Rereao i tēnei ara ki te tuhituhi i tāna paki whakamārama pohewa mō te kūaka. Tirohia ngā whārangi e whai ake nei.

Te Paki Whakamārama



I te kōanga i haere a Rereao ki te ngutuawa o te awa o Manawatū. I reira i kite ia i ētahi kūaka e rapu kai ana, kātahi anō rātou ka hoki mai i tāwāhi. I puta te hiahia ki a Rereao ki te tuhi i te paki pohewa hei whakamārama i te hekenga o ngā kūaka ia tau, ia tau. Ka whakaaro pohewa ia ki tētahi whakamārama iti hei ārahi i tāna tuhinga.

Te āhutatanga

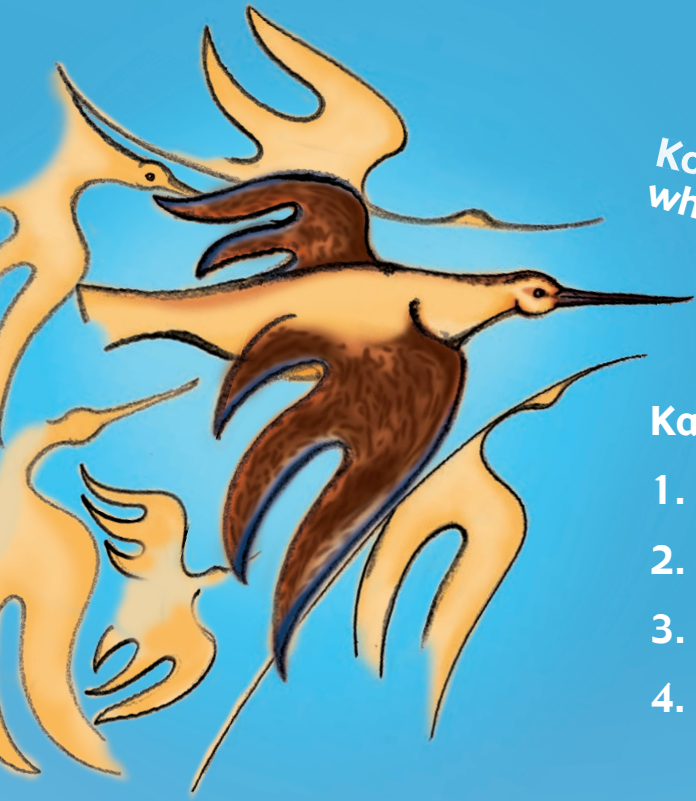
Ka rere atu ngā kūaka ki whenua kē ia tau, ia tau.

Te whakamārama

Ka tae mai he iwi kai manu, ka matakū ngā manu, ka rere atu ngā kūaka ki pāmamao hei whakawhānau pīpī



Te Horopaki



Ko te mahi tuatahi mā te kaituhi, ko te whakaaro ki te horopaki o tāna tuhinga.

Ka whakautu ia i ēnei pātai:

1. He aha te pūtake o te tuhinga?
2. Mā wai te tuhinga?
3. He aha te momo tuhinga?
4. He aha tētahi tapanga mō te tuhinga?

Tirohia ngā whakautu a Rereao ki ngā pātai mō te horopaki o te tuhinga. Ka whiriwhiri ia i tētahi tapanga kia hāngai pū ōna whakaaro ki tāna kaupapa. Ka taea e ia te tīni mēnā he whakaaro atu anō ka puta mai.



- | | |
|----------------------------|--|
| 1. Te pūtake: | He whakamārama i te rerenga o ngā kūaka ki whenua kē ia tau, ia tau. |
| 2. Ngā kaipānui: | Ōku hoa mahi |
| 3. Te momo tuhinga: | He paki whakamārama pohewa |
| 4. Te tapanga: | Te Rerenga o te Kūaka |

Te Anga o te Paki



*Ka huri i nāiane i a Rereao ki te whakarite
i te anga o tāna tuhinga ki te mahere.
Ka whakautu ia i ngā pātai kei ia wāhanga,
ā, ka tuhi hei tuhinga tīpoka.*

Te Tapanga: *Te Rerenga o te Kūaka*

Te Whakamārama

*Ka tae mai he iwi kai manu, ka matakū
ngā manu, ka rere atu ngā kūaka ki
pāmamao hei whakawhānau pīpī*

Te Whakataunga

1. I pēhea te mahi i tau ai?

*Ka whakatau ngā kūaka ki te rere
tawhiti atu*

2. He aha te āhuetanga i puta mai ki te taiao?

*I ia tau rere atu ngā kūaka i
Aotearoa i te ngahuru, ka hoki
mai i te kōanga*



Te Whakatakinga

1. I nahea te mahi i mahia ai?

*I te wā e noho ana te kūaka ki
Aotearoa i ia wāhanga o te tau*

2. Ko wai ngā kiripuaki?

*Ngā kūaka, te iwi tauhou, ētahi
atu momo manu*

3. He pēhea te āhua o te wāhi?

Ngutuawa, tata ki te moana

**Tuhia tētahi rerenga tuhituhi e tohu ana i
tētahi tū āhuetanga o te mahi kei te haere.**

He iti noa iho ngā kai kōkiko manu

Te Raupapatanga Mahi

1. I pēhea te mahi i tīmata ai?

*I tae atu he kōiora rerekē, he
tauhou
Ka ohorere ngā kūaka*

2. I pēhea te mahi i tipu haere ai ki tōna teiteitanga?

*I tipu te matakū
He iwi kaimanu!*

3. He aha tōna teiteitanga?

Ka hui ngā manu kia kimi oranga

Ngā kupu whakaahua



Ka tuhi a Rereao i ētahi kupu hei whakaahua i te āhua o ngā kiripuaki me te wāhi i tū ai te mahi. Tāpiri atu, ka tuhi hoki ia i ētahi kupu e hāngai pū ana ki ētahi o ngā tū āhuatanga o te paki.

Ngā kupu whakaahua

Ngā kiripuaki

Ngā kūaka

- manu waitai
- toa ki te rere
- manu whakaaronui

Te iwi tauhou

- tauhou
- e rua ngā waewae
- korekau he huruhuru, parirau
- iwi kaimanu

Ngā kupu hāngai ki te paki whakamārama

- paopaotanga
- ngahuru
- rere pāmamao
- kaikikokiko manu
- koiora
- pākiki
- matakū
- kirea, kekē, kākū
- haumarū
- kōanga
- raumati

Te wāhi

- ngutuawa
- tātahi, moana



Kei te whārangi 63 tētahi mahere hei āwhina i te kaituhi.

Te Whakatakinga

Ka huri a Rereao i nāiane i te whakarite i te whakatakinga o tāna tuhinga. Ka hoki anō ia ki āna tuhinga tipoka mō tēnei wāhanga, kātahi ka tuhi ia hei rerenga tuhituhi mō te whakatakinga. Tirohia ngā kupu whakaahua kua tohua.

Te Whakatakinga

1. I nahea te mahi i mahia ai?

I te wā e noho ana te kūaka ki Aotearoa i ia wāhanga o te tau

2. Ko wai ngā kiripuaki?

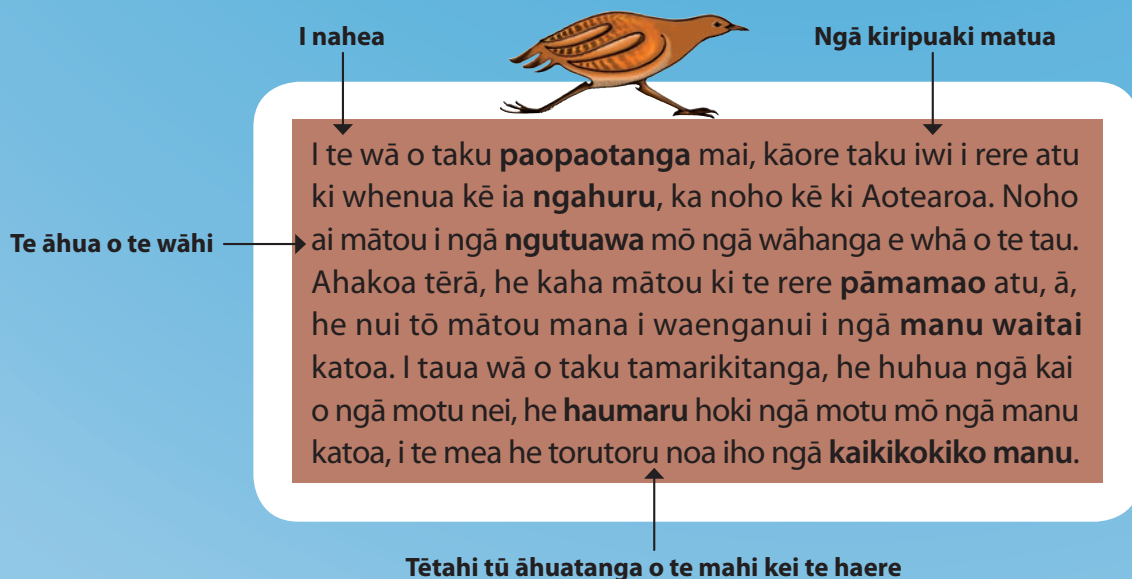
Ngā kūaka, te iwi tauhou, ētahi atu momo manu

3. He pēhea te āhua o te wāhi?

Ngutuawa, tata ki te moana

Tuhia tētahi rerenga tuhituhi e tohu ana i tētahi tū āhuatanga o te mahi kei te haere.

He iti noa iho ngā kaikikokiko manu



I nahea

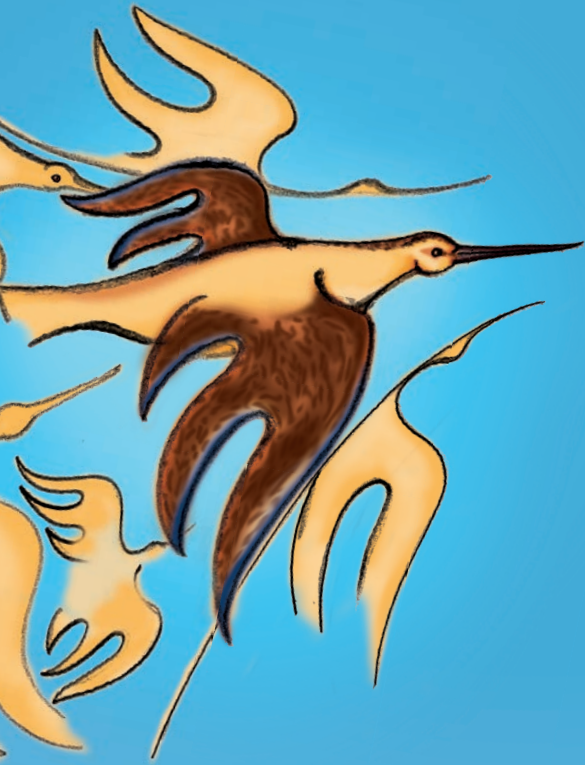
Ngā kiripuaki matua

Te āhua o te wāhi

Tētahi tū āhuatanga o te mahi kei te haere

I te wā o taku **paopaotanga** mai, kāore taku iwi i rere atu ki whenua kē ia **ngahuru**, ka noho kē ki Aotearoa. Noho ai mātou i ngā **ngutuawa** mō ngā wāhanga e whā o te tau. Ahakoa tērā, he kaha mātou ki te rere **pāmamao** atu, ā, he nui tō mātou mana i waenganui i ngā **manu waitai** katoa. I taua wā o taku tamarikitanga, he huhua ngā kai o ngā motu nei, he **haumarū** hoki ngā motu mō ngā manu katoa, i te mea he torutoru noa iho ngā **kaikikokiko manu**.

Te Raupapatanga Mahi



Ka huri a Rereao i nāiane i ki te whakarite i te raupapatanga mahi o tāna tuhinga. Ka hoki anō ia ki āna tuhinga tīpoka mō tēnei wāhanga, kātahi ka whakawhānuihia ngā tuhinga, ka whakaraupapahia hoki ki te mahere ripo.

I pēhea te mahi i timata ai?

I tētahi ahiahi i ngā pipi manu e korikori ana ki tātahi ka puta ohore me tētahi mea i te moana pēnei me te rākau. He koiroa rerekē i runga i ngā rākau.



Te Raupapatanga Mahi

1. I pēhea te mahi i timata ai?

*I tae atu he koiroa rerekē, he tauhou
Ka ohore ngā kūaka*

2. I pēhea te mahi i tipu haere ai ki tōna teiteitanga?

*I tipu te matakū
He iwi kaimanu!*

3. He aha tōna teiteitanga?

Ka hui ngā manu kia kimi oranga

I pēhea te mahi i tipu haere ai ki tōna teiteitanga?

Ka tipu te pākiki me te matakū ki ngā manu nā te taenga mai o ngā tauhou. Ka huna ngā manu me te mātakitaki atu i te koiroa rerekē.

Kāore i roa ka marama rātou he iwi kaimanu te tauhou nei. Ka mate haere ngā momo manu, ka huna ētahi atu.

Te teiteitanga →

Ka whakatūria he hui e ngā manu hei whakatau me aha rātou mō te oranga tonutanga o ngā manu katoa. Ka rangona atu ngā kirea, ngā kekē me ngā kūkū a ngā manu.

Tuhia te raupapatanga mahi



Ka tuhi a Rereao i ngā kōwae e whā mō te raupapatanga mahi: tētahi mō te tīmatanga o te mahi, e rua mō te tipu o te mahi, me tētahi mō te teiteitanga o te mahi.

Te tīmatanga
o te mahi

Heoi, i tētahi ahiahi pō, i a mātou ko aku whanaunga e tākaro ana i te onepū, ka puta ohorere mai tētahi mea, he ōrite ki te rākau nui, e rere ana i runga i te moana, ā, ka aro mai ki uta. I tō mātou kitenga atu i ngā koiora tino rerekē e noho ana i runga i te rākau, ka nui tō mātou pākiki me te matakū hoki. Ka huna mātou me te mātakitaki i a rātou e heke ana ki uta.

Te tipu
o te mahi

“He aha rā tērā momo koiora?” tō mātou pātai ki a mātou anō. “He mea roa pērā i te moa, e rua ngā waewae pēnei i te manu, engari kāore ō rātou huruhuru, kāore hoki he parirau.” Ka māharahara mātou, “Ka aha ngā tauhou rā i konei?”

Auē! Kāore i roa, kua mārāma ki a mātou te mahi a te iwi tauhou. He iwi kaimanu rātou! Ka nui te matakū a ngā manu katoa. Taro ake nei, kua mate te katoa o ētahi whānau manu, kua tīmata te noho huna a ētahi atu. Nā tēnā ka whakatūria he hui mō ngā manu katoa hei kimi huarahi mō te oranga.

Te teiteitanga

Ka hui ngā momo manu katoa i te wāhi huna. Ka rangona atu ngā kīrea, ngā kekē me ngā kūkū. “Me aha tātou?” te tangi a ētahi. “Kei mate katoa tātou!” Ka tū ngā rangatira o ia whānau manu ki te kōrero atu ki te minenga. I te mea he rerekē te oranga o tēnā manu, o tēnā manu, kāore he whakataunga kotahi. Otirā, me tīni ngā whanonga o ia manu, o ia manu. Ki te kore e tīni, ka mate noa atu.

Te Whakataunga

Ka huri i nāiane i a Rereao ki te tuhi i te whakataunga. Ka hoki anō ia ki āna tuhinga tīpoka mō tēnei wāhanga, kātahi ka tuhi ia hei rerenga tuhituhi mō te whakataunga. Ka āta whakaaro hoki a Rereao ki te pūtake o te paki whakamārama pohewa hei tuhi i tāna whakataunga.

Te Whakataunga

1. I pēhea te mahi i tau ai?

Ka whakataua ngā kūaka ki te rere tawhiti atu

2. He aha te āhuetanga i puta mai ki te taiao?

I ia tau rere atu ngā kūaka i Aotearoa i te ngahuru, ka hoki mai i te kōanga



“Kia mau, kia mau, e hoa mā!” tā te rangatira o te rōpū kaumātua o ngā kūaka, “Anei te whakataunga mō mātou, mō ngā kūaka. Mā tō mātou kaha ki te rere ki tawhiti, ka ora ngā uri whakatipu. Ka kimihia he whenua pāmamao, he whenua haumaruru ki reira whakawhānau ai i ngā pīpī. Otirā, kia mōhio ai ngā uri ki tō mātou kāinga tūturu, ia tau ka hoki mātou ki Aotearoa mō te kōanga me te raumati.”

Nā reira, mai i taua wā, ia tau, ia tau i te kōanga ka hoki mai mātou ki Aotearoa mō te wā mahana o te tau, ā, i te ngahuru ka hoki atu ngā kāhui kūaka ki te whenua pāmamao whakawhānau ai i te whakatipuranga hou.

I pēhea te mahi i tau ai?

He aha te āhuetanga i puta mai ki te taiao?

Nā te āhuetanga i puta mai ki te taiao ka tīni a Rereao i te tapanga mō tāna paki whakamārama pohewa. E kīia ana, ‘Kūaka Rerenga Roa’.

Te Paki Whakamārama Pohewa a Rereao



Tirohia ngā wāhanga katoa o te tuhinga a Rereao.

Kūaka Rerenga Roa

I te wā o taku paopaotanga mai, kāore taku iwi i rere atu ki whenua kē ia ngahuru, ka noho kē ki Aotearoa. Noho ai mātou i ngā ngutuawa mō ngā wāhanga e whā o te tau. Ahakoa tērā, he kaha mātou ki te rere pāmamao atu, ā, he nui tō mātou mana i waenganui i ngā manu waitai katoa. I taua wā o taku tamarikitanga, he huhua ngā kai o ngā motu nei, he haumaru hoki ngā motu mō ngā manu katoa, i te mea he torutoru noa iho ngā kaikikokiko manu.

Heoi, i tētahi ahiahi pō, i a mātou ko aku whanaunga e tākaro ana i te onepū, ka puta ohore mai tētahi mea, he ōrite ki te rākau nui, e rere ana i runga i te moana, ā, ka aro mai ki uta. I tō mātou kitenga atu i ngā koiora tino rerekē e noho ana i runga i te rākau, ka nui tō mātou pākiki me te matakū hoki. Ka huna mātou me te mātakitaki i a rātou e heke ana ki uta.

“He aha rā tērā momo koiora?” tō mātou pātai ki a mātou anō. “He mea roa pērā i te moa, e rua ngā waewae pēnei i te manu, engari kāore ō rātou huruhuru, kāore hoki he parirau.” Ka māharahara mātou, “Ka aha ngā tauhou rā i konei?”

Auē! Kāore i roa, kua māmama mātou ki te mahi a te iwi tauhou. He iwi kaimanu rātou! Ka nui te matakū o ngā manu katoa. Taro ake nei, kua mate te katoa o ētahi whānau manu, kua tīmata te noho huna a ētahi atu. Nā tēnā ka whakatūria he hui mō ngā manu katoa hei kimi huarahi mō te oranga.

Ka hui ngā momo manu katoa i te wāhi huna. Ka rangona atu ngā kīrea, ngā kekē me ngā kūkū. “Me aha tātou?” te tangi a ētahi. “Kei mate katoa tātou!” Ka tū ngā rangatira o ia whānau manu ki te kōrero atu ki te minenga. I te mea he rerekē te oranga o tēnā manu, o tēnā manu, kāore he whakataunga kotahi. Otirā, me tīni ngā whanonga o ia manu, o ia manu. Ki te kore e tīni, ka mate noa atu.

“Kia mau, kia mau, e hoa mā!” tā te rangatira o te rōpū kaumātua o ngā kūaka, “Anei te whakataunga mō mātou, mō nga kūaka. Mā tō mātou kaha ki te rere ki tawhiti, ka ora ngā uri whakatipu. Ka kimihia he whenua pāmamao, he whenua haumaru ki reira whakawhānau ai i ngā pīpī. Otirā, kia mōhio ai ngā uri ki tō mātou kāinga tūturu, ia tau ka hoki mātou ki Aotearoa mō te kōanga me te raumati.”

Nā reira, mai i taua wā, ia tau, ia tau i te kōanga ka hoki mai mātou ki Aotearoa mō te wā mahana o te tau, ā, i te ngahuru ka hoki atu ngā kāhui kūaka ki te whenua pāmamao whakawhānau ai i te whakatipuranga hou.

He Taurira Anō

Ko ngā taurira anō hei whakaatu i te whanaketanga o ngā āhuetanga reo, ngā tikanga tuhituhi me ngā kupu mō te paki whakamārama pohewa.

Ka tirohia te tuhinga, ngā āhuetanga reo me ngā wāhanga o ēnei taurira tuhinga.



He Paki Whakamārama Pohewa hei Taurira



I a Taumata i te moana i mātakitaki ia i te timu o te tai me tana pātai ki a ia anō, nā te aha i pērā ai? Ka whakaaro pohewa, ka titoa he paki whakamārama pohewa e pā ana ki te tai timu me te tai pari.

Papaki Tū ana ngā Tai i a Hineākau

Nō neherā anō i piri kaha atu a Tangaroa ki te oneone. Nā tōna hiahia ki te noho tata tonu atu ki tōna whaea, ki a Papa-tū-ā-nuku, kore rawa ia e neke atu i te oneone. I ngā wā katoa ka mirimiri ia i a Papa-tū-ā-nuku ki ōna ngaru papaku. Ka uaina a Tangaroa e Ranginui, ka kawē atu ia i ngā roimata rā hei korowai mō tana whaea. I runga anō i tana kore neke, he ōrite te hōhonutanga o te wai moana ahakoa te wā, ahakoa hoki te wāhi. Ko Hineākau te tuahine o Tangaroa, ā, he mokemoke anō tōna ki tōna matua, otirā, ki a Ranginui.

I tētahi rā i rongo a Tangaroa i a Hineākau e tangi hotuhotu ana. “He aha tō raruraru, e mara?” te pātai a Tangaroa. “He aha koe e tangi atu ai?”

Ka mea atu a Hineākau, “Kei te tino mokemoke au ki tō tāua pāpā. Kāhore au i kite i a ia nō te wā i whakawehea rāua ko tō tāua whaea e Tāne. Nā tōu noho pūmau ki te takutai ka uhia ahau ki te wai i ngā wā katoa, kāhore e taea e au te kite i tōku pāpā. Auē, Tangaroa, tōku mokemoke hoki!” Ka noho a Tangaroa, ka whakaarohia ngā kōrero o tana tuahine me tana wahangū nā tōna mōhio he waimarie nōna ka kite atu ia i ōna mātua i te ao, i te pō, i te pō, i te ao.

Nāwai rā, ka kaha ake te tangi hotuhotu a Hineākau. Ka tipu te hōhā ki ōna hoa tata me ōna whanaunga i te rongo atu i tana tangi hotuhotu. Ka hāparangi iho a Marama ki a ia, “E hoa, Hineākau, he aha te raruraru? Kei te hōhā haere mātou i a koe e tangi nā.”

Ka whakahokia e Hineākau, “Kei raro au e mokemoke ana ki tōku pāpā, ki a Ranginui, kāore e kore kua wareware i a māua tahi ō māua hanga.”

Ka tiaho iho a Marama me tana ki a Hineākau, “Koinā noa iho te take mō tō tangi hotuhotu? Me mutu i konei tō tangi, e Hine. Ka noho tahi tātou, ka wānangahia tēnei take nōu, ā, ka whai hua tātou katoa.”

Otirā, he mōhio nō Marama ki te mārōtanga o Tangaroa me tana kore hiahia kia whai wāhi a Hineākau me Ranginui. Kātahi te tautohetohe ka tīmata mai. Ko tā Tangaroa, “Engari anō mōu, Hineākau, waiho māku ngā rekereke o Papa-tū-ā-nuku e mirimiri i ngā wā katoa.”

Ko tā Hineākau, “Whai wāhi mai, e te tungāne, kia kite atu au i a Ranginui.”

“Kāti te tautohe,” te whakahau a Marama, “ko tēnei taku whakatau. Ka whakawehea te wā kia pēnei. Kia ono haora ki te tai pari ki a koe, Tangaroa, hei awahi i a Papa-tū-ā-nuku, ā, whai muri kia ono haora anō ki te tai timu ki a koe, Hineākau, kia kite atu i a Ranginui. Māku e whakarite te wā ia rā, ia pō, kia tika te roa.”

Nō te whakaaetanga a Tangaroa, a Hineākau hoki ki te whakataunga a Marama, ka mutu te tautohe, ka nui hoki te harikoa o Hineākau ka whai wāhi ia ki te kite i tōna pāpā. Nā tēnei whakataunga a Marama me ana whakaritenga, koirā i puta ai ko te tai timu, me te tai pari.

Ngā Āhuatanga Reo

Tirohia ngā āhuatanga reo kua whakamahia e Taumata i tāna paki whakamārama pohewa.



Te reo tohu wāmua

Nō neherā anō
I tētahi rā

Te reo tohu i te mahi a tētahi atu

Ko Hineākau te
tuahine a Tangaroa,
ā, he mokemoke anō
tōna ki tōna matua,
otirā, ki a Ranginui.

Te reo raupapa

Nāwai rā
Kātahi te tautohetohe ka
tīmata mai

Te reo whakaahua

hei korowai mō tana whaea
ōna ngaru papaku
tangi hotuhotu ana

Te reo tūhono i te take me te pānga

Nā tōu noho pūmau...
Nā tēnei whakataunga...

Te whakawhiti kōrero

Te kīwaha

Kei raro au e mokemoke ana
Engari anō mōu, Hineākau

Papaki Tū ana ngā Tai i a Hineākau

Nō neherā anō i piri kaha atu a Tangaroa ki te oneone. Nā tōna hiahia ki te noho tata tonu atu ki tōna whaea, ki a Papa-tū-ā-nuku, kore rawa ia e neke atu i te oneone. I ngā wā katoa ka mirimiri ia i a Papa-tū-ā-nuku ki ōna ngaru papaku. Ka uaina a Tangaroa e Ranginui, ka kawea atu ia i ngā roimata rā hei korowai mō tana whaea. I runga anō i tana kore neke, he ōrite te hōhonutanga o te wai moana ahakoa te wā, ahakoa hoki te wāhi. Ko Hineākau te tuahine o Tangaroa, ā, he mokemoke anō tōna ki tōna matua, otirā, ki a Ranginui.

I tētahi rā i rongo a Tangaroa i a Hineākau e tangi hotuhotu ana. “He aha tō raruraru, e mara?” te pātai a Tangaroa. “He aha koe e tangi atu ai?”

Ka mea atu a Hineākau, “Kei te tino mokemoke au ki tō tāua pāpā. Kāhore au i kite i a ia nō te wā i whakawehea rāua ko tō tāua whaea e Tāne. Nā tōu noho pūmau ki te takutai ka uhia ahau ki te wai i ngā wā katoa, kāhore e taea e au te kite i tōku pāpā. Auē, Tangaroa, tōku mokemoke hoki!” Ka noho a Tangaroa, ka whakaarohia ngā kōrero o tana tuahine me tana wahangū nā tōna mōhio he waimarie nōna ka kite atu ia i ōna mātua i te ao, i te pō, i te pō, i te ao.

Nāwai rā, ka kaha ake te tangi hotuhotu a Hineākau. Ka tipu te hōhā ki ōna hoa tata me ōna whanaunga i te rongo atu i tana tangi hotuhotu. Ka hāparangi iho a Marama ki a ia, “E hoa, Hineākau, he aha te raruraru? Kei te hōhā haere mātou i a koe e tangi nā.”

Ka whakahokia e Hineākau, “Kei raro au e mokemoke ana ki tōku pāpā, ki a Ranginui, kāore e kore kua wareware i a māua tahi ō māua hanga.”

Ka tiaho iho a Marama me tāna ki a Hineākau, “Koinā noa iho te take mō tō tangi hotuhotu? Me mutu i konei tō tangi, e Hine. Ka noho tahi tātou, ka wānangahia tēnei take nōu, ā, ka whai hua tātou katoa.”

Otirā, he mōhio nō Marama ki te mārōtanga o Tangaroa me tana kore hiahia kia whai wāhi a Hineākau me Ranginui. Kātahi te tautohetohe ka tīmata mai. Ko tā Tangaroa, “Engari anō mōu, Hineākau, waiho māku ngā rekereke o Papa-tū-ā-nuku e mirimiri i ngā wā katoa.”

Ko tā Hineākau, “Whai wāhi mai, e te tungāne, kia kite atu au i a Ranginui.”

“Kāti te tautohe,” te whakahau a Marama, “ko tēnei taku whakatau. Ka whakawehea te wā kia pēnei. Kia ono haora ki te tai pari ki a koe, Tangaroa, hei awahi i a Papa-tū-ā-nuku, ā, whai muri kia ono haora anō ki te tai timu ki a koe, Hineākau, kia kite atu i a Ranginui. Māku e whakarite te wā ia rā, ia pō, kia tika te roa.”

Nō te whakaaetanga a Tangaroa, a Hineākau hoki ki te whakataunga a Marama, ka mutu te tautohe, ka nui hoki te harikoa o Hineākau ka whai wāhi ia ki te kite i tōna pāpā. Nā tēnei whakataunga a Marama me ana whakaritenga, koirā i puta ai ko te tai timu, me te tai pari.

Tirohia ngā whārangi 37 me 38 mō te whakamāramatanga o ēnei āhuatanga reo.



Ngā Wāhanga

Tirohia ngā wāhanga e whā o te paki whakamārama pohewa a Taumata.

Te tapanga

Papaki Tū ana ngā Tai i a Hineākau

Te whakatakinga

Nō neherā anō i piri kaha atu a Tangaroa ki te oneone. Nā tōna hiahia ki te noho tata tonu atu ki tōna whaea, ki a Papa-tū-ā-nuku, kore rawa ia e neke atu i te oneone. I ngā wā katoa ka mirimiri ia i a Papa-tū-ā-nuku ki ōna ngaru papaku. Ka uaina a Tangaroa e Ranginui, ka kawē atu ia i ngā roimata rā hei korowai mō tana whaea. I runga anō i tana kore neke, he ōrite te hōhonutanga o te wai moana ahakoa te wā, ahakoa hoki te wāhi. Ko Hineākau te tuahine o Tangaroa, ā, he mokemoke anō tōna ki tōna matua, otirā, ki a Ranginui.

Te raupapatanga mahi

I tētahi rā i rongō a Tangaroa i a Hineākau e tangi hotuhotu ana. “He aha tō raruraru, e mara?” te pātai a Tangaroa. “He aha koe e tangi atu ai?”

Ka mea atu a Hineākau, “Kei te tino mokemoke au ki tō tāua pāpā. Kāhore au i kite i a ia nō te wā i whakawehea rāua ko tō tāua whaea e Tāne. Nā tōu noho pūmau ki te takutai ka uhia ahau ki te wai i ngā wā katoa, kāhore e taea e au te kite i tōku pāpā. Auē, Tangaroa, tōku mokemoke hoki!” Ka noho a Tangaroa, ka whakaarohia ngā kōrero o tana tuahine me tana wahangū nā tōna mōhio he waimarie nōna ka kite atu ia i ōna mātua i te ao, i te pō, i te pō, i te ao.

Nāwai rā, ka kaha ake te tangi hotuhotu a Hineākau. Ka tipu te hōhā ki ōna hoa tata me ōna whanaunga i te rongō atu i tana tangi hotuhotu. Ka hāparangi iho a Marama ki a ia, “E hoa, Hineākau, he aha te raruraru? Kei te hōhā haere mātou i a koe e tangi nā.”

Ka whakahokia e Hineākau, “Kei raro au e mokemoke ana ki tōku pāpā, ki a Ranginui, kāore e kore kua wareware i a māua tahi ō māua hanga.”

Ka tiaho iho a Marama me tāna ki a Hineākau, “Koinā noa iho te take mō tō tangi hotuhotu? Me mutu i konei tō tangi, e Hine. Ka noho tahi tātou, ka wānangahia tēnei take nōu, ā, ka whai hua tātou katoa.”

Otirā, he mōhio nō Marama ki te mārōtanga o Tangaroa me tana kore hiahia kia whai wāhi a Hineākau me Ranginui. Kātahi te tautohetohe ka tīmata mai. Ko tā Tangaroa, “Engari anō mōu, Hineākau, waiho māku ngā rekereke o Papa-tū-ā-nuku e mirimiri i ngā wā katoa.”

Ko tā Hineākau, “Whai wāhi mai, e te tungāne, kia kite atu au i a Ranginui.”

Te whakataunga

“Kāti te tautohe,” te whakahau a Marama, “ko tēnei taku whakatau. Ka whakawehea te wā kia pēnei. Kia ono haora ki te tai pari ki a koe, Tangaroa, hei awhi i a Papa-tū-ā-nuku, ā, whai muri kia ono haora anō ki te tai timu ki a koe, Hineākau, kia kite atu i a Ranginui. Māku e whakarite te wā ia rā, ia pō, kia tika te roa.”

Nō te whakaaetanga a Tangaroa, a Hineākau hoki ki te whakataunga a Marama, ka mutu te tautohe, ka nui hoki te harikoa o Hineākau ka whai wāhi ia ki te kite i tōna pāpā. Nā tēnei whakataunga a Marama me ana whakaritenga, koirā i puta ai ko te tai timu, me te tai pari.

Tirohia te whārangi 41 mō te whakamāramatanga o ēnei wāhanga.

He Paki Whakamārama Pohewa hei Taurira



*He mīharo katoa ngā uenuku ki a Leon.
Ko tāna, nā te aha i pērā ai ngā tae o te uenuku?
Ka puta ētahi whakaaro, kātahi ka tuhi ia i tētahi
paki whakamārama pohewa mō ngā tae o te uenuku.*

Ngā Tae o Uenuku

I ngā wā o uki rā anō, kāore he tae i a Uenuku. Ina puta ia i te rangi, kāore ētahi i mōhio i reira ia, nā te mea kāore ia e kitea ana. Ka titiro atu a Uenuku, ka kite i a Tamanui-te-rā e whiti whakameremere ana i te awatea, a Marama e rewa whakahihī ana i tōna pae i te pō. Ka kite i a Kōpū e kōrekoreko mai ana i te atapō, i a Meremere anō hoki e kānapanapa ana i te ahiahi. Engari anō a Uenuku, tē kitea!

Ka pōuri a Uenuku, ka whakaaro ake ia, “Ko au anake te uri o te rangi kāore e kitea ana.” I ngā wā katoa ka whakatoitia ia e ērā atu tamariki a Rangi rāua ko Papa.

“He aha hoki ō take ki te kore koe e kitea?” te whakapehapeha a rātau mā. Ka pōuri, ka tangi hotuhotu anō hoki ia i te kino o tōna whakamā.

Nāwai rā, ka rongō a Ranginui rāua ko Papa-tū-ā-nuku i te tangi hotuhotu a Uenuku, ka pātai, “He aha rā te mate, Uenuku?”

“Auē, ko au anake te tamaiti e kore nei e kitea i te rangi, nā te mea he pūataata tōku āhua. Me te aha, ko au te papa o ngā kōrero kata huri noa,” tā Uenuku.

Ka aroha a Rangi rāua ko Papa ki tā rāua tamaiti, ka kī atu, “Mā māua koe e whakakākahu ki ngā tae kia kitea ai tō ātaahua e te ao katoa.”

Ka kī atu a Papa, “Ko te tae tuatahi ka hoatu e au ki a koe, ko te whero. Kia rite tō tae ki te tae o tōku kiri.”

“Māku te tuarua me te tuatoru o ngā tae e hoatu ki a koe,” te kī a Rangi. “He karaka tētahi tae kia rite ki te tae o tōku uma i te awatea. He kōwhai tētahi tae kia rite ki ngā whetū e kimokimo mai ana i te pō.” Ka timata te menemene o te kanohi o Uenuku, nā te mea kua whai āhua ia.

“Māku anō hoki te tae tuawhā me te tuarima e hoatu ki a koe, Uenuku,” tā Papa. “Ko te kākāriki te tuawhā mōu, ā, ko te kahurangi te tuarima. Ka kitea ko te kākāriki i te wao tapu nui a Tāne. Ko te kahurangi ka kitea i ngā wai marino o Tangaroa.”

“Māku te tae tuaono e hoatu ki a koe,” te whakamārama a Rangi ki a Uenuku. “Ko te wai-poroporo hei whakaatu i tōku āhua i te ahiahi rikoriko.”

“Hei whakaotinga mā māua,” te kōrero a Rangi rāua ko Papa ki a Uenuku, “ko te tae whakamutunga mōu, ko te kura-rangi. He whenumitanga tēnei tae o te kura, arā, te tae o te kiri o tō whaea, me te kahurangi, te tae o te kiri o tō matua i te haeata. Ko tēnei te tae hei whakamaumahara i a koe ki tō māua aroha ki a koe, e te tau.”

Kī ana te ngākau o Uenuku i te harikoa. “Tēnā rawa atu kōrua, e te matua, e te whaea. E kore e wareware i a au tō kōrua aroha ki a au, ā, māku e whakaatu ki te ao katoa kia mōhio ai rātau.” Nō reira, mai i taua wā ki tēnei wā, tū whakahihī ana a Uenuku me ōna tae e whitu i te rangi.



Ngā Āhuatanga Reo

Tirohia ngā āhuatanga reo kua whakamahia e Leon i tāna paki whakamārama pohewa.

Te reo tohu wāmua

I ngā wā o uki rā anō
Ina puta ia i te rangi

Te reo tohu i te mahi a tētahi atu

Ina puta ana ia i te rangi,
kāore ētahi i mōhio i reira
ia, nā te mea kāore ia e
kitea ana.

Te reo raupapa

Nāwai rā
Ka..., ka...

Te whakawhiti kōrero

Te reo whakaahua

E kōrekoreko mai ana
E kānapanapa ana
He kōwhai tētahi tae
kia rite ki ngā whetū...

Te reo tūhono i te take me te pānga

Auē, ko au anake te
tamaiti e kore nei e
kitea i te rangi, nā te
mea he pūataata tōku
āhua.

Te kiwaha

Engari anō a Uenuku
Me te aha

Ngā Tae o Uenuku

I ngā wā o uki rā anō, kāore he tae i a Uenuku. Ina puta ia i te rangi, kāore ētahi i mōhio i reira ia, nā te mea kāore ia e kitea ana. Ka titiro atu a Uenuku, ka kite i a Tamanui-te-rā e whiti whakameremere ana i te awatea, a Marama e rewa whakahihī ana i tōna pae i te pō. Ka kite i a Kōpū e kōrekoreko mai ana i te atapō, i a Meremere anō hoki e kānapanapa ana i te ahiahi. Engari anō a Uenuku, tē kitea!

Ka pōuri a Uenuku, ka whakaaro ake ia, “Ko au anake te uri o te rangi kāore e kitea ana.” I ngā wā katoa ka whakatoitia ia e ērā atu tamariki a Rangi rāua ko Papa.

“He aha hoki ō take ki te kore koe e kitea?” te whakapehapeha a rātau mā. Ka pōuri, ka tangi hotuhotu anō hoki ia i te kino o tōna whakamā.

Nāwai rā, ka rongo a Ranginui rāua ko Papa-tū-ā-nuku i te tangi hotuhotu a Uenuku, ka pātai, “He aha rā te mate, Uenuku?”

“Auē, ko au anake te tamaiti e kore nei e kitea i te rangi, nā te mea he pūataata tōku āhua. Me te aha, ko au te papa o ngā kōrero kata huri noa,” tā Uenuku.

Ka aroha a Rangi rāua ko Papa ki tā rāua tamaiti, ka kī atu, “Mā māua koe e whakakākahu ki ngā tae kia kitea ai tō ātaahua e te ao katoa.”

Ka kī atu a Papa, “Ko te tae tuatahi ka hoatu e au ki a koe, ko te whero. Kia rite tō tae ki te tae o tōku kiri.”

“Māku te tuarua me te tuatoru o ngā tae e hoatu ki a koe,” te kī a Rangi. “He karaka tētahi tae kia rite ki te tae o tōku uma i te awatea. He kōwhai tētahi tae kia rite ki ngā whetū e kimokimo mai ana i te pō.” Ka tīmata te menemene o te kanohi o Uenuku, nā te mea kua whai āhua ia.

“Māku anō hoki te tae tuawhā me te tuarima e hoatu ki a koe, Uenuku,” tā Papa. “Ko te kākāriki te tuawhā mōu, ā, ko te kahurangi te tuarima. Ka kitea ko te kākāriki i te wao tapu nui a Tāne. Ko te kahurangi ka kitea i ngā wai marino o Tangaroa.”

“Māku te tae tuaono e hoatu ki a koe,” te whakamārama a Rangi ki a Uenuku. “Ko te wai-poroporo hei whakaatu i tōku āhua i te ahiahi rikoriko.”

“Hei whakaotinga mā māua,” te kōrero a Rangi rāua ko Papa ki a Uenuku, “ko te tae whakamutunga mōu, ko te kura-rangi. He whenumitanga tēnei tae o te kura, arā, te tae o te kiri o tō whaea, me te kahurangi, te tae o te kiri o tō matua i te haeta. Ko tēnei te tae hei whakamaumahara i a koe ki tō māua aroha ki a koe, e te tau.”

Ki ana te ngākau o Uenuku i te harikoa. “Tēnā rawa atu kōrua, e te matua, e te whaea. E kore e wareware i a au tō kōrua aroha ki a au, ā, māku e whakaatu ki te ao katoa kia mōhio ai rātau.” Nō reira, mai i taua wā ki tēnei wā, tū whakahihī ana a Uenuku me ōna tae e whitu i te rangi.

Tirohia ngā whārangi 37 me 38 mō te whakamāramatanga o ēnei āhuatanga reo.

Ngā Wāhanga



Tirohia ngā wāhanga e whā o te paki whakamārama pohewa a Leon.

Te tapanga

Te whakatakinga

Te raupapatanga mahi

Te whakataunga

Ngā Tae o Uenuku

I ngā wā o uki rā anō, kāore he tae i a Uenuku. Ina puta ia i te rangi, kāore ētahi i mōhio i reira ia, nā te mea kāore ia e kitea ana. Ka titiro atu a Uenuku, ka kite i a Tamanui-te-rā e whiti whakameremere ana i te awatea, a Marama e rewa whakahihī ana i tōna pae i te pō. Ka kite i a Kōpū e kōrekoreko mai ana i te atapō, i a Meremere anō hoki e kānapanapa ana i te ahiahi. Engari anō a Uenuku, tē kitea!

Ka pōuri a Uenuku, ka whakaaro ake ia, “Ko au anake te uri o te rangi kāore e kitea ana.” I ngā wā katoa ka whakatoitia ia e ērā atu tamariki a Rangi rāua ko Papa.

“He aha hoki ō take ki te kore koe e kitea?” te whakapehapeha a rātau mā. Ka pōuri, ka tangi hotuhotu anō hoki ia i te kino o tōna whakamā.

Nāwai rā, ka rongoa a Ranginui rāua ko Papa-tū-ā-nuku i te tangi hotuhotu a Uenuku, ka pātai, “He aha rā te mate, Uenuku?”

“Auē, ko au anake te tamaiti e kore nei e kitea i te rangi, nā te mea he pūataata tōku āhua. Me te aha, ko au te papa o ngā kōrero kata huri noa,” tā Uenuku.

Ka aroha a Rangi rāua ko Papa ki tā rāua tamaiti, ka kī atu, “Mā māua koe e whakakāhahu ki ngā tae kia kitea ai tō ātaahua e te ao katoa.”

Ka kī atu a Papa, “Ko te tae tuatahi ka hoatu e au ki a koe, ko te whero. Kia rite tō tae ki te tae o tōku kiri.”

“Māku te tuarua me te tuatoru o ngā tae e hoatu ki a koe,” te kī a Rangi. “He karaka tētahi tae kia rite ki te tae o tōku uma i te awatea. He kōwhai tētahi tae kia rite ki ngā whetū e kimokimo mai ana i te pō.” Ka tīmata te menemene o te kanohi o Uenuku, nā te mea kua whai āhua ia.

“Māku anō hoki te tae tuawhā me te tuarima e hoatu ki a koe, Uenuku,” tā Papa. “Ko te kākāriki te tuawhā mōu, ā, ko te kahurangi te tuarima. Ka kitea ko te kākāriki i te wao tapu nui a Tāne. Ko te kahurangi ka kitea i ngā wai marino o Tangaroa.”

“Māku te tae tuaono e hoatu ki a koe,” te whakamārama a Rangi ki a Uenuku. “Ko te wai-poroporo hei whakaatu i tōku āhua i te ahiahi rikoriko.”

“Hei whakaotinga mā māua,” te kōrero a Rangi rāua ko Papa ki a Uenuku, “ko te tae whakamutunga mōu, ko te kura-rangi. He whenumitanga tēnei tae o te kura, arā, te tae o te kiri o tō whaea, me te kahurangi, te tae o te kiri o tō matua i te haeata. Ko tēnei te tae hei whakamaumahara i a koe ki tō māua aroha ki a koe, e te tau.”

Kī ana te ngākau o Uenuku i te harikoa. “Tēnā rawa atu kōrua, e te matua, e te whaea. E kore e wareware i a au tō kōrua aroha ki a au, ā, māku e whakaatu ki te ao katoa kia mōhio ai rātau.” Nō reira, mai i taua wā ki tēnei wā, tū whakahihī ana a Uenuku me ōna tae e whitu i te rangi.

Tirohia te whārangi 41 mō te whakamāramatanga o ēnei wāhanga.

He Mahere Ārahi i te Tuhituhi



Te Anga o te Paki Whakamārama

Te Tapanga:

Te Whakamārama

Te Whakatakinga

1. I nahea te mahi i mahia ai?
2. Ko wai ngā kiripuaki?
3. He pēhea te āhua o te wāhi?

Tuhia tētahi rerenga tuhituhi e tohu ana i tētahi tū āhuatanga o te mahi kei te haere.

Te Whakataunga

1. I pēhea te mahi i tau ai?
2. He aha te āhuatanga i puta mai ki te taiao?

Te Raupapatanga Mahi

1. I pēhea te mahi i tīmata ai?
2. I pēhea te mahi i tipu haere ai ki tōna teiteitanga?
3. He aha tōna teiteitanga?

Ngā Kupu Whakaahua me ngā Kupu Hāngai ki te Paki Whakamārama

Ngā kupu
whakaahua

Ngā kiripuaki

Te wāhi

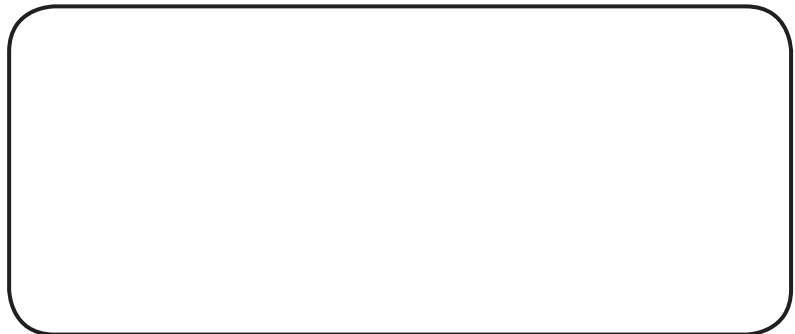
Ngā kupu hāngai ki te paki whakamārama

Te Raupapatanga Mahi mō te Paki Whakamārama

I pēhea te mahi i tīmata ai?



I pēhea te mahi
i tipu haere ai ki
tōna teiteitanga?



Te teiteitanga →

Ngā Tauira Tuhinga



Ka Riro a Rona i te Marama

I ngā rā o mua, tērā tētahi tupuna nō tātou, ko Rona tōna ingoa. E noho ana a Rona me tōna whānau ki tētahi papakāinga iti. He manga iti e pātata ana ki te papakāinga. He pakupaku ngā tamariki a Rona, nā reira nā Rona te wai i tiki mai i te manga ia rā, ia rā.

I tētahi pō atarau e moe ana a Rona me āna tamariki. Kātahi ka oho te pēpi, ka whakaoho hoki i ōna tuākana. Ka karanga atu rātou ki a Rona kia homai he inu wai. Ahakoa tōna hiamoe, maranga ana a Rona, haere atu ana ki te manga, he tahā kei tētahi ringa.

He whāiti, he kōpikopiko te ara mai i te kāinga ki te manga, he rākau teitei kei ngā taha me ngā ātārangi pōuriuiri. Engari, i whitingia te ara e te marama, ā, he māmā te haere a Rona. Kātahi ka huna te marama ki muri i tētahi kapua. Kua pōuri katoa te ara whāiti, ā, ka tūtuki ngā waewae o Rona ki ngā pakiaka nunui o ngā rākau. Pupū ana te riri o Rona ki te marama. Ka titiro ia ki runga ki te marama, ka hāmama tōna waha me ana kōrero hahani ki a ia, “Upokokōhua koe, Marama! Tō ngoikore hoki ki te tiaho mai. E mate inu wai ana aku tamariki, engari tē taea e au te ara te kite.”

Kātahi ka riri anō hoki te marama ki a Rona. Whakatopa iho ana, whātoro ana te ringa, ā, mau ana ki a Rona. Ka pāngia a Rona e te matakū. Ka toro tana ringa ki te rākau ngaio i tōna taha, mau pupuri ana, me te karanga atu ki tōna whānau kia haere mai ki te āwhina i a ia. Kāore he aha ki te marama. Ka nui ake tōna riri, ka nui ake hoki tōna kaha. Ahakoa ngā inoi atu a Rona ki te marama me te pupuri ki te rākau ngaio, ka kumea ia, ka wāhia te rākau ngaio, ā, ka tangohia ake a Rona.

Ka haria ake a Rona e te marama ki tōna kāinga i te rangi. Mai i taua wā kei runga a Rona i te marama e noho ana, e mātakitaki iho ana ki tōna kāinga o mua. Nō reira, ki te titiro koe ki runga ki te marama i ngā pō atarau, ka kitea tonutia a Rona, tana tahā me te rākau ngaio hoki.

Ngā Rā a Kupe

E ai ki ngā kōrero onamata kua tukuna mai, ko Kupe te tangata tuatahi ki tēnei whenua o Aotearoa. He kaiwhakatere, he kaitoro rongonui tēnei o ngā tīpuna o ngāi tātou. He tangata autaiā, he tangata pakari, he tangata mōhio hoki ki ngā tū āhuatanga maha o te taiao.

Ka whakanohoa e Kupe tana iwi ki te tai tonga o te Wairarapa, ki te takutai moana e kīia nei ko te Mātakitaki-ā-Kupe. Kei te rohe e kōrerotia nei te maha o ngā kōrero mō Kupe, mō ōna haerenga me āna mahi. Ki tēnei o ngā takiwā he hiwi, he toka, he moana kīkī ana i te maha o ngā momo ika.

Ko Ngake tētahi hoa tata o Kupe, otirā he hoa whakataetae hoki. Kāore i te pērā te rongonui o Ngake i ngā kōrero mō Aotearoa whānui pēnei i a Kupe, heoti anō rā he rangatira, he tangata pakari hoki ia.

Nō tō rāua kaha ki te whakataetae ki a rāua anō, ka puta mai tētahi tautohetohe mō te toa ki te hanga rā mō te waka. I te mea kua whakataetae kē rāua mō te hanga waka, ā, i toa a Kupe, ko te whakapae a Kupe koia kei a ia mō te hanga rā. Ka pērā hoki te whakapono a Ngake ki a ia anō. Nō runga anō i tēnei, ka whakatū whakataetae rāua ki te hanga rā kia kitea ai ko wai kē te toa.

Ka tīmata tā rāua mahi hanga rā i te ahiahi pō. Ka puku te rae o te tokorua nei ki te hanga tere, me te hanga pai i o rāua ake rā. Ka rākaunui te marama i te ata hāpara, ka oti i a Kupe āna rā te hanga. Engari a Ngake, kāore i oti tae noa ki te atatū rā anō. Ka mutu, ko Kupe te toa.

Ahakoā te hua o te whakataetae, ka noho hūmārie tonu te tokorua nei me ō rāua whānau. Tāria ana te wā, ka whai wāhi anō rāua ki te whakatū whakataetae.

Kei te pari ki te Mātakitaki-ā-Kupe ēnei rā e iri ana. Ko ‘Ngā Rā a Kupe’ te ingoa tapa ki ēnei rā, ki tērā wāhi o te pari. Ki tō te karu titiro, he toka papa ngā rā e kōrerotia nei, ā, ko te āhua he pēnei me te tapatoru. Ko tētahi a mua o te pari, ko tētahi a muri. Ka kitea tonutia ēnei rā i tēnei wā o tātou. Otirā, tērā pea e rangona tonu ana mai i ngā uri o Kupe rāua ko Ngake te wairua whakataetae, me te wairua hūmārie o ngā tīpuna nei.

Te Ika a Māui

Tērā tētahi tipuna e kīia ana he tangata, he atua. Ko Māui tōna ingoa. Noho ai rātou ko tōna whānau i tētahi motu o te moana nui. Ko Māui te pōtiki o te whānau, ā, kāore ōna tuākana e aro atu ki a ia.

I tētahi rangi ka rongoa ia i ōna tuākana e kōrero ana mō tētahi haerenga ki te moana ki te hī ika. I te tino hiahia a Māui ki te haere, engari kāore ōna tuākana i whakaae. I te atatū tonu ka wehe atu ngā tuākana me ā rātou aho ki te au moana. Kāore rātou i mōhio i te huna a Māui i raro i ngā kupenga i roto i te waka. I a ia hoki te kauae o tōna tipuna, o Muri-ranga-whenua.

Nāwai rā, i tae atu ki te tauranga ika e mōhiohia ana e ngā tuākana. Ohorere katoa te hunga nei me te wehi hoki i te putanga ake o Māui i raro i ngā kupenga. “Hoea! Hoea!” tana whakahau. “Kaua e tukuna ngā aho i konei. Karawhiua ngā hoe! Karawhiua!” Nā te kaha ohorere o ngā tuākana, pūrere ana ngā huka o te moana i te ngau a ngā hoe. Ahakoa te roa o te hoe, te ngenge o te tinana, i hoe tonu ngā tuākana. He pō, he ao, kātahi anō ka tae atu. “Koinei. Tukuna ngā aho i konei,” te kī a Māui.

Nā te kaha pūhaehae, me te riri hoki ki tō rātou taina, kāore ngā tuākana i hoatu mōunu mā Māui. Hei aha hoki ki a Māui, mekea ana e ia tana ihu kia toto, kātahi ka pania ki te kauae o tōna tipuna. Koinei te matau hī a Māui. Ka tukuna kia rere ki te moana pōuriuri.

Nāwai rā, rangona ana tētahi ngau i tana aho. Ka tukua e Māui ngā karakia e tika ana. Ka kukume, ka hautō, ka tō ake. I a ia e hautō ana, i noho piri tata ngā tuākana i tō rātou wehi. Ka kaha ake te whawhai a te ika, ka kaha ake te karakia me te kukume a Māui. Ehara, rewa ake ana he ika nui, he ika roa, he tipua.

Mōhio tonu a Māui me haere ia ki te tūāhu o tōna tipuna, o Muri-ranga-whenua. “Kaua tētahi e whāwhā i te ika nei,” tāna ki ōna tuākana. “Kia hoki mai ahau ka wehewehe ai.” Tē aro atu ngā tuākana. Haehaetia kētia ana e rātou te ika ki ā rātou hoe.

Ā, nō te hokinga mai o Māui ka rongoa ngā tuākana i tōna riri, kātahi ka mutu tō rātou mahi haehae. Heoi, nā tēnei mahi tūkinu ka puta ko ngā whāruarua, ko ngā raorao, ko ngā pae maunga, ko ngā puia o te whenua nei. Kai te raki ko te hiku o te ika nei, kai te tonga ko tōna upoko. Tae mai ki nāianei ko tētahi o ngā ingoa taketake o te motu nei ko Te Ika a Māui.

Kūaka Rerenga Roa

I te wā o taku paopaotanga mai, kāore taku iwi i rere atu ki whenua kē ia ngahuru, ka noho kē ki Aotearoa. Noho ai mātou i ngā ngutuawa mō ngā wāhanga e whā o te tau. Ahakoa tērā, he kaha mātou ki te rere pāmamao atu, ā, he nui tō mātou mana i waenganui i ngā manu waitai katoa. I taua wā o taku tamarikitanga, he huhua ngā kai o ngā motu nei, he haumarū hoki ngā motu mō ngā manu katoa, i te mea he torutoru noa iho ngā kaikikokiko manu.

Heoi, i tētahi ahiahi pō, i a mātou ko aku whanaunga e tākaro ana i te onepū, ka puta ohore mai tētahi mea, he ōrite ki te rākau nui, e rere ana i runga i te moana, ā, ka aro mai ki uta. I tō mātou kitenga atu i ngā koiora tino rerekē e noho ana i runga i te rākau, ka nui tō mātou pākiki me te matakū hoki. Ka huna mātou me te mātakitaki i a rātou e heke ana ki uta.

“He aha rā tērā momo koiora?” tō mātou pātai ki a mātou anō. “He mea roa pērā i te moa, e rua ngā waewae pēnei i te manu, engari kāore ō rātou huruhuru, kāore hoki he parirau.” Ka māharahara mātou, “Ka aha ngā tauhou rā i konei?”

Auē! Kāore i roa, kua mārāma mātou ki te mahi a te iwi tauhou. He iwi kaimanu rātou! Ka nui te matakū o ngā manu katoa. Taro ake nei, kua mate te katoa o ētahi whānau manu, kua tīmata te noho huna a ētahi atu. Nā tēnā ka whakatūria he hui mō ngā manu katoa hei kimi huarahi mō te oranga.

Ka hui ngā momo manu katoa i te wāhi huna. Ka rangona atu ngā kīrea, ngā kekē me ngā kūkū. “Me aha tātou?” te tangi a ētahi. “Kei mate katoa tātou!” Ka tū ngā rangatira o ia whānau manu ki te kōrero atu ki te minenga. I te mea he rerekē te oranga o tēnā manu, o tēnā manu, kāore he whakataunga kotahi. Otirā, me tīni ngā whanonga o ia manu, o ia manu. Ki te kore e tīni, ka mate noa atu.

“Kia mau, kia mau, e hoa mā!” tā te rangatira o te rōpū kaumātua o ngā kūaka, “Anei te whakataunga mō mātou, mō ngā kūaka. Mā tō mātou kaha ki te rere ki tawhiti, ka ora ngā uri whakatipu. Ka kimihia he whenua pāmamao, he whenua haumarū ki reira whakawhānau ai i ngā pīpī. Otirā, kia mōhio ai ngā uri ki tō mātou kāinga tūturu, ia tau ka hoki mātou ki Aotearoa mō te kōanga me te raumati.”

Nā reira, mai i taua wā, ia tau, ia tau i te kōanga ka hoki mai mātou ki Aotearoa mō te wā mahana o te tau, ā, i te ngahuru ka hoki atu ngā kāhui kūaka ki te whenua pāmamao whakawhānau ai i te whakatipuranga hou.

Papaki Tū ana ngā Tai i a Hineākau

Nō neherā anō i piri kaha atu a Tangaroa ki te oneone. Nā tōna hiahia ki te noho tata tonu atu ki tōna whaea, ki a Papa-tū-ā-nuku, kore rawa ia e neke atu i te oneone. I ngā wā katoa ka mirimiri ia i a Papa-tū-ā-nuku ki ōna ngaru papaku. Ka uaina a Tangaroa e Ranginui, ka kawē atu ia i ngā roimata rā hei korowai mō tana whaea. I runga anō i tana kore neke, he ōrite te hōhonutanga o te wai moana ahakoa te wā, ahakoa hoki te wāhi. Ko Hineākau te tuahine o Tangaroa, ā, he mokemoke anō tōna ki tōna matua, otirā, ki a Ranginui.

I tētahi rā i rongo a Tangaroa i a Hineākau e tangi hotuhotu ana. “He aha tō raruraru, e mara?” te pātai a Tangaroa. “He aha koe e tangi atu ai?”

Ka mea atu a Hineākau, “Kei te tino mokemoke au ki tō tāua pāpā. Kāhore au i kite i a ia nō te wā i whakawehea rāua ko tō tāua whaea e Tāne. Nā tōu noho pūmau ki te takutai ka uhia ahau ki te wai i ngā wā katoa, kāhore e taea e au te kite i tōku pāpā. Auē, Tangaroa, tōku mokemoke hoki!” Ka noho a Tangaroa, ka whakaarohia ngā kōrero o tana tuahine me tana wahangū nā tōna mōhio he waimarie nōna ka kite atu ia i ōna mātua i te ao, i te pō, i te pō, i te ao.

Nāwai rā, ka kaha ake te tangi hotuhotu a Hineākau. Ka tipu te hōhā ki ōna hoa tata me ōna whanaunga i te rongo atu i tana tangi hotuhotu. Ka hāparangi iho a Marama ki a ia, “E hoa, Hineākau, he aha te raruraru? Kei te hōhā haere mātou i a koe e tangi nā.”

Ka whakahokia e Hineākau, “Kei raro au e mokemoke ana ki tōku pāpā, ki a Ranginui, kāore e kore kua wareware i a māua tahi ō māua hanga.”

Ka tiaho iho a Marama me tāna ki a Hineākau, “Koinā noa iho te take mō tō tangi hotuhotu? Me mutu i konei tō tangi, e Hine. Ka noho tahi tātou, ka wānangahia tēnei take nōu, ā, ka whai hua tātou katoa.”

Otirā, he mōhio nō Marama ki te mārōtanga o Tangaroa me tana kore hiahia kia whai wāhi a Hineākau me Ranginui. Kātahi te tautohetohe ka tīmata mai. Ko tā Tangaroa, “Engari anō mōu, Hineākau, waiho māku ngā rekereke o Papa-tū-ā-nuku e mirimiri i ngā wā katoa.”

Ko tā Hineākau, “Whai wāhi mai, e te tungāne, kia kite atu au i a Ranginui.”

“Kāti te tautohe,” te whakahau a Marama, “ko tēnei taku whakatau. Ka whakawehea te wā kia pēnei. Kia ono haora ki te tai pari ki a koe, Tangaroa, hei awahi i a Papa-tū-ā-nuku, ā, whai muri kia ono haora anō ki te tai timu ki a koe, Hineākau, kia kite atu i a Ranginui. Māku e whakarite te wā ia rā, ia pō, kia tika te roa.”

Nō te whakaaetanga a Tangaroa, a Hineākau hoki ki te whakataunga a Marama, ka mutu te tautohe, ka nui hoki te harikoa o Hineākau ka whai wāhi ia ki te kite i tōna pāpā. Nā tēnei whakataunga a Marama me ana whakaritenga, koirā i puta ai ko te tai timu, me te tai pari.

Ngā Tae o Uenuku

I ngā wā o uki rā anō, kāore he tae i a Uenuku. Ina puta ia i te rangi, kāore ētahi i mōhio i reira ia, nā te mea kāore ia e kitea ana. Ka titiro atu a Uenuku, ka kite i a Tamanui-te-rā e whiti whakameremere ana i te awatea, a Marama e rewa whakahihī ana i tōna pae i te pō. Ka kite i a Kōpū e kōrekoreko mai ana i te atapō, i a Meremere anō hoki e kānapanapa ana i te ahiahi. Engari anō a Uenuku, tē kitea!

Ka pōuri a Uenuku, ka whakaaro ake ia, “Ko au anake te uri o te rangi kāore e kitea ana.” I ngā wā katoa ka whakatoitia ia e ērā atu tamariki a Rangi rāua ko Papa.

“He aha hoki ō take ki te kore koe e kitea?” te whakapehapeha a rātau mā. Ka pōuri, ka tangi hotuhotu anō hoki ia i te kino o tōna whakamā.

Nāwai rā, ka rongō a Ranginui rāua ko Papa-tū-ā-nuku i te tangi hotuhotu a Uenuku, ka pātai, “He aha rā te mate, Uenuku?”

“Auē, ko au anake te tamaiti e kore nei e kitea i te rangi, nā te mea he pūataata tōku āhua. Me te aha, ko au te papa o ngā kōrero kata huri noa,” tā Uenuku.

Ka aroha a Rangi rāua ko Papa ki tā rāua tamaiti, ka kī atu, “Mā māua koe e whakakākahu ki ngā tae kia kitea ai tō ātaahua e te ao katoa.”

Ka kī atu a Papa, “Ko te tae tuatahi ka hoatu e au ki a koe, ko te whero. Kia rite tō tae ki te tae o tōku kiri.”

“Māku te tuarua me te tuatoru o ngā tae e hoatu ki a koe,” te kī a Rangi. “He karaka tētahi tae kia rite ki te tae o tōku uma i te awatea. He kōwhai tētahi tae kia rite ki ngā whetū e kimokimo mai ana i te pō.” Ka tīmata te menemene o te kanohi o Uenuku, nā te mea kua whai āhua ia.

“Māku anō hoki te tae tuawhā me te tuarima e hoatu ki a koe, Uenuku,” tā Papa. “Ko te kākāriki te tuawhā mōu, ā, ko te kahurangi te tuarima. Ka kitea ko te kākāriki i te wao tapu nui a Tāne. Ko te kahurangi ka kitea i ngā wai marino o Tangaroa.”

“Māku te tae tuaono e hoatu ki a koe,” te whakamārama a Rangi ki a Uenuku. “Ko te wai-poroporo hei whakaatu i tōku āhua i te ahiahi rikoriko.”

“Hei whakaotinga mā māua,” te kōrero a Rangi rāua ko Papa ki a Uenuku, “ko te tae whakamutunga mōu, ko te kura-rangi. He whenumitanga tēnei tae o te kura, arā, te tae o te kiri o tō whaea, me te kahurangi, te tae o te kiri o tō matua i te haeata. Ko tēnei te tae hei whakamaumahara i a koe ki tō māua aroha ki a koe, e te tau.”

Kī ana te ngākau o Uenuku i te harikoa. “Tēnā rawa atu kōrua, e te matua, e te whaea. E kore e wareware i a au tō kōrua aroha ki a au, ā, māku e whakaatu ki te ao katoa kia mōhio ai rātau.” Nō reira, mai i taua wā ki tēnei wā, tū whakahihī ana a Uenuku me ōna tae e whitu i te rangi.

Te Kuputaka

ata hāpara	Te wā o te ata ka kitea te hae o te rā. ata pongipongi
ātārangi	He āhua ka kitea i muri i tētahi mea ina ka whitikia e te rā.*
atarau	Ko te atarau te whitinga mai o te marama i ngā pō.*
autaiā	He tangata pakari me tōna kore matakū.
haeata	Te awatea, te urunga mai o te rā.
haumarū	He mea kua āta tiakina hei pupuri i te mauri ora.*
hautō	Ki te hautō koe i tētahi mea, ka tōia e koe.*
huhua	Ko te mea huhua, te mea maha noa.*
kaitoro	He tangata ka toro, arā, ka hāereere ki ngā tōpito maha o te motu, otirā o te ao.
kaiwhakaterē	Ki te whakaterē koe i tētahi mea pēnei me te waka, kua riro māu tērā waka e ārahi kia haere ki ngā huarahi e hiahiatia ana.*
koiora	Te oranga o te tangata, o te kararehe, o te tipu rānei.*
kōpikopiko	He mea he nui ngā huringa pērā i te huarahi.*
kōrekoreko	He mea tino kanapa, tino whiti mai tērā.
kōrero hahani	Te whiu kōrero whakaiti, kōrero patu wairua. He āhua pēnei me te kangakanga.
pakiāka	Ko te pakiāka te wāhanga o te rākau e pupuri ana ki te one.*
pākiki	Ki te pākiki koe he nui ō pātai i ngā wā katoa, he nui hoki te hiahia ki te mōhio he aha te aha.*
pōua	He ingoa tapa ā-iwi mō te koroua. Ko Kāi Tahu te iwi e kaha whakamahi ana.
pūataata	Ki te pūataata tētahi mea, kāore e kitea taua mea, ka taea te kite mā roto.
pūhaehae	Ko te pūhaehae te kino o te ngākau ki ētahi mō ā rātou mea pai.*
puia	Ko te puia he maunga pahū ahi pērā i a Ruapehu.*
rā	Ko te rā he parirau hei whakaterē i te waka haere moana.*
rākaunui	Te āhua o te marama ka kitea i waenganui i ia marama o te tau.
raorao	He whenua e papa ana te takoto mai, he whenua whānui, he whenua wātea hoki.
rikoriko	Ko te kōrikoriko, te rarapa, te muramura mai o tētahi mea.
tahā	He ipu hei kawē i te wai.
tūāhu	He wāhi tapu mō te tuku karakia ki ngā atua.
tuhinga tīpoka	Ko ngā tuhinga poto hei whakawhāiti i ngā whakaaro, i ngā mātauranga rānei.
tūtuki	Ki te tūtuki koe ki tētahi mea, ka pā kaha atu koe ki taua mea.*
wāhi(a)	Ki te wāhia tētahi mea, ka tīhoretia, ka pakaru.
whakameremere	Ki te whakameremere koe, ka mahi koe kia aro atu ētahi atu ki a koe.
whakapehapeha	Ki te whakapehapeha tētahi ka whakahīhi ia ki āna ake mea, ka whakahāwea hoki ki tētahi atu.
whāruarua	Ko ngā whāruarua ngā wāhi kei waenganui i ngā pari maunga, i ngā puke teitei rānei.*
whātoro	Ki te whātoro atu koe i tētahi mea, ka panaia whakamua, ka whakamahia rānei kia roa ake.*
whenumi(tanga)	Ki te whenumi koe i ētahi mea, ka whakamahia kia kotahi.

* Te Tāhuhu o te Mātauranga. (2006). *Tirohia Kimihia: He Kete Wherawhera*. Te Whanganui-a-Tara: Huia Te Manu Tuku Kōrero.

Ngā Tohutoro

Biggs, B. (1990). *Me ako taatou i te reo Māori: He Whakamaaramatanga moo ngaa mahi ako i te Reo Māori*. He mahi whakamāori nā Cleve Barlow. Auckland: Billy King Holdings.

Biggs, B. (Ed.) (1997). *He Whiriwhiringa: Selected Readings in Māori*. Auckland: Auckland University Press.

Derewianka, B. (1991). *Exploring How Texts Work*. Rozelle, N.S.W.: Primary English Teaching Association.

Education Department of Western Australia. (1997). *Writing Resource Book: First Steps*. Melbourne: Rigby Heinemann.

Harlow, R. (2004). *A Māori Reference Grammar*. Auckland: Pearson Education.

Joseph, D. (2004). *Te kohinga pukapuka – Te Kōrari*. Wellington: H.A.N.A Limited.

Joseph, D. (2006, June). *He Momo Kōrero Māori, He Momo Tuhinga, He Nuka Reo: Māori Text Types, Genre and Literary Devices*. Report for the Ministry of Education Māori Language Education Team. Palmerston North: Te Pūtahi-a-Toi.

Māori Language Commission Te Taura Whiri i te Reo Māori. (1996). *Te Matatiki: Contemporary Māori Words*. Auckland: Oxford University Press.

Māori Language Commission Te Taura Whiri i te Reo Māori. *Orthographic Conventions*. I tangohia i te 29/11/2005 mai i http://www.tetaurawhiri.govt.nz/english/pub_e/conventions2.shtml

Mead, H. M., rāua ko Grove, N. (2001). *Ngā Pēpeha o ngā Tipuna*. Wellington: Victoria University Press.

Ngata, H. M. (1993). *English-Māori Dictionary*. Te Whanganui ā Tara: Te Pou Taki Kōrero.

Orbell, M. (2003). *Birds of Aotearoa: A Natural and Cultural History*. Auckland: Reed Publishing.

Riley, M. (2001). *Māori Bird Lore: An Introduction*. Paraparaumu: Viking Sevensseas NZ Ltd.

Ryan, P. M. (2001). *The Reed Dictionary of Modern Māori*. Second edition. New Zealand: Reed Publishing.

Taurere, Rev. M. (1993). Te Kuaka. *Te Wharekura* 40, wh. 20-25.

Te Tāhuhu o te Mātauranga. (1996). *Te Reo Māori i roto i te Marautanga o Aotearoa*. Te Whanganui-a-Tara: Te Pou Taki Kōrero.

Te Tāhuhu o te Mātauranga. (2006). *Tirohia Kimihia: He Kete Wherawhera*. Te Whanganui-a-Tara: Huia Te Manu Tuku Kōrero.

Williams, H. W. (1975). *A Dictionary of the Māori Language*. Seventh edition. Wellington: Government Printer.



Te Matapaki

Mā te matapaki, ka whanake
ngā pūkenga tuhituhi.

Ngā Mātāpono me ngā Pūtake Whānui mō te Matapaki

E whā ngā mātāpono hei ārahi i te kaituhi me ngā tāngata āwhina ki te matapaki i āna tuhinga:

- Whakarongo ki te kaituhi.
- Ākina, tautokohia te kaituhi.
- Arahina te kaituhi ki te ara e tika ana mōna.
- E tika ana kia whai wāhi ngā tāngata āwhina ki te āwhina i te kaituhi, kaua te tuhinga.

E whā ngā pūtake whānui o te matapaki:

- Hei akiaki i te kaituhi kia whakaaturia ōna mōhiotanga kē, hei whai māramatanga hoki mō ngā mahi kei mua i a ia.
- Kia rangona e te kaituhi ngā whakawhitinga kōrero a tangata kē, kia mōhio ai ia i ngā mea kāore anō kia mau i a rātou.
- Hei āwhina i te kaituhi kia mārāma ia ki ngā āhuatanga tuhituhi kua tutuki i a ia i tāna tuhinga.
- Kia whakamōhio atu te kaituhi i ōna mōhiotanga ki te kaiako, mā tēnā te kaiako ka āwhina i a ia kia mau ngā momo rautaki tuhituhi e tika ana.

I te tuatahi, whakatauria te aronga, te huarahi me te momo matapaki.

Ngā Huarahi Matapaki

Ko ēnei ētahi o ngā huarahi pai mō te matapaki i te tuhinga:

- Takitahi
- Takirua me tētahi hoa
- Takirua me te kaiako
- Takitini

Ngā Momo Matapaki

He whakamārama i ngā pūtake o ngā momo matapaki

Matapaki mō te Kaupapa

E hāngai ana tēnei matapaki ki ngā mātauranga e hiahia ana te kaituhi kia mau i te kaupānui. Hei tauira, i te tuhinga takenga pūtaiao ka tuhi pea te kaituhi mō te take i pērā ai tētahi tū āhuatanga.

Ngā Pātai Ārahi

Ētahi pātai hei ārahi i ngā momo matapaki

- He aha te pūtake o te tuhinga?
- Mā wai te tuhinga?
- He aha tētahi tapanga mō te tuhinga?
- He aha ōu whakaaro matua mō te tuhinga?
- He aha ngā whakaaro ka tautoko i ōu whakaaro matua?
- Whakamāramatia mai ōu whakaaro.
- He mōhiotanga anō me rapu?
- He pātai atu anō āu mō te tuhinga?

Matapaki mō te Momo Tuhinga

E hāngai ana tēnei matapaki ki te momo tuhinga e tika ana mō ngā mātauranga ka whakaaturia. Hei tauira, i te tuhinga taki whaiaro ka ahu mai te hiahia i te kaituhi ki te tuhi mō tētahi wheako whaiaro ōna, ā, ka raupapahia tērā wheako i te taki.

- He aha te momo tuhinga e tika ana?
- He aha te tino take o tāu tuhinga e hiahia ana koe kia mau i te kaipānui?
- Kua whakaritea ngā whakaaro matua me ngā whakaaro tautoko?
- He tika rānei te raupapatanga o ngā mahi?
- Kua whai whakaaro ki ngā mātauranga katoa e tika ana mō te tuhinga?
- Ka aha i nāianei?

Matapaki mō ngā Momo Rautaki Tuhituhi

E hāngai ana tēnei matapaki ki ngā rautaki tuhituhi kua whakamahia e te kaituhi i a ia e tuhituhi ana, ā, nā te aha hoki i pērā ai. Ko te pūtake o tēnei matapaki ko te āwhina i te kaituhi ki te tāutu i ngā rautaki kua whakamahia kē e ia, ki te whakawhanake hoki i tāna āheinga ki te whakamahi i ētahi atu rautaki tuhituhi.

- He aha ngā rautaki tuhituhi i whakamahia e koe ki te timata i tāu tuhinga?
- He aha ētahi raruraru i puta i a koe e tuhi ana? I ahatia ērā raruraru e koe kia oti pai ai te mahi tuhituhi? He aha māku hei āwhina i a koe?
- I pēhea tāu kōwhiringa pūtake mō tāu tuhinga?
- I muri mai i te kōwhiringa pūtake i ngāwari noa iho te kimi whakaaro hei tautoko i taua pūtake?
- Kua rerekē pēhea nei āu rautaki tuhituhi?
- Kua kite au i ētahi kupu/rerenga kua whakarerekētia e koe. I pēhea tāu whakatau kia pērā ai te whakarerekē?

Matapaki mō te Arotake Tuhinga

He matapaki tēnei hei āwhina i te kaituhi ki te pānui i āna ake tuhinga mai i te tirohanga o te hunga pānui. Ka tuku pātai te kaituhi ki a ia anō mō te māramatanga, te painga me te tutukitanga o ana tuhinga ki te kaipānui.

- He aha ōu whakaaro mō te tuhinga?
- He kupu pai ake i ērā kua whakamahia? He kupu pai ake kia mau ai i te kaipānui te pānga/iho o te tuhinga?
- Kua tuhia katoatia ngā mātauranga e hiahia ana koe kia mau i te kaipānui?
- E tika ana te reo kua whakamahia i te tuhinga kia pai ai te kawenga o ngā whakaaro?
- He pai te raupapatanga o ōu whakaaro?
- Me whai āwhina te kaipānui kia mārāma pai ai ia ki āu tuhinga?

Matapaki mō te Whakatika Tuhinga

E hāngai ana tēnei matapaki ki ngā āhuatanga kua whakatikaina kē e te kaituhi, ki te whakatika hoki i ngā tikanga tuhituhi pēnei me te tātaki kupu, te kārawarawatanga me te takotoranga o ngā kupu.

- E tika ana te ia o te tuhinga?
- E tika ana te noho o ngā tohutō?
- He tika te whakatakotoranga o ngā rerenga tuhituhi?
- Kua tuhia e koe ngā kārawarawatanga i ngā wā, i ngā wāhi hoki e tika ana?
- Ko tēnei te tino kōunga o āu mahi tuhituhi?
- Kua tutuki i a koe tētahi o āu whāinga ako? Ka aro tāua ki ēhea o ngā whāinga ako i nāianei?

Matapaki mō te Whakaputa Tuhinga

E hāngai ana tēnei matapaki ki ngā momo whakatau e tika ana mō te whakaputa, arā, te tā tuhinga. Hei tauira, mā tēnei matapaki ka whakatauria mehemea ka tuhituhi mā te ringa, mā te rorohiko rānei me te whiriwhiri i ngā pikitia e tika ana mō te tuhinga.

- He aha te momo hanga o te tuhinga kua tā – he mahere, he pukapuka, he aha rānei?
- He aha tētahi ara kia tutuki pai ai te tā i te tuhinga?
- Ka tuhituhi koe mā te ringa, mā te rorohiko rānei?
- Mā wai e tā – māu, mā te kaiako, mā tētahi kaiāwhina rānei?
- He aha ētahi pikitia e pai ana?
- Ka meatia he pikitia kua tuhia ā-ringa, ā-rorohiko, he whakaahua rānei?

Te Tukanga Tuhituhi

Me toro te kaituhi ki mua, ki muri ki ngā wāhanga katoa kia pai ai te takoto o te tuhinga.

Te Whakarite Te whakatau, te whakarite whakaaro

- Tāutuhia te pūtake me ngā kaipānui
- Whakatauria te momo tuhinga
- Whiriwhiria tētahi tapanga kia hāngai pū ōu whakaaro ki te kaupapa
- Kohia ōu whakaaro
- Rapuhia te mātauranga
- Whakaritea ngā whakaaro matua me ngā whakaaro tautoko mō ngā wāhanga o te tuhinga

Te Whakatakoto Te waihanga tuhinga tuatahi

- Raupapahia ōu whakaaro me ngā mātauranga
- Waihangatia tāu tuhinga kia kitea te hononga o ngā whakaaro matua me ngā whakaaro tautoko
- I a koe e tuhi ana, me whakaaro hoki ki ētahi pātai e pā ana ki te pūtake o te tuhinga me ōna pānga

Te Whakamārama Te arotake, te whakamārama ake

- Pānuihia, ā, arotakengia ōu whakaaro me ngā mātauranga
- Toro atu ki tētahi/ētahi atu kia whai whakaaro arotake mai ki āu tuhinga, ā, whakamanahia ngā kōrero āwhina a te kaiarotake
- Pānuihia anō āu tuhinga kia arotakengia te pānga o te tuhinga ki te kaipānui
- Arotakengia ō tuhinga mā ēnei ara:
 - tīnīhia te raupapatanga o ngā whakaaro, o ngā kupu rānei
 - tīnīhia ngā kupu, ngā rerenga tuhituhi rānei kia pai ake te takoto o te tuhinga
 - tāpiritia atu he mātauranga anō

Te Whakatika Te whakatikatika i te reo

- Pānuihia anō tāu tuhinga
- Whakatikaina te reo o tāu tuhinga – te tātaki tika o ngā kupu, ngā tohutō, te wetewete reo me ngā kārawarawatanga

Te Whakaputa Te tā tuhinga

- Tāngia tāu tuhinga kia ngāwari noa iho te pānui, kia ātaahua hoki te takoto mā te kaipānui

Tuku atu, tuku mai Te tuku atu hei pānuitanga

- Tukuna tāu tuhinga kia pānuihia e tētahi/ētahi atu

He Pātai Ārahi

Mā te kaituhi, mā te kaipānui rānei ngā pātai nei.

- He aha te pūtake o te tuhinga?
- Mā wai te tuhinga?
- He aha te momo tuhinga?
- He aha tētahi tapanga mō te tuhinga?
- Whakamāramatia mai ōu whakaaro.
- He aha ōku/ōu whakaaro matua mō te tuhinga?
- He aha ngā whakaaro ka tautoko i ōku/ōu whakaaro matua?
- He mōhiotanga anō me rapu?

- He aha te tino take o te tuhinga e hiahia ana au/koe kia mau i te kaipānui?
- Kua tika te raupapatanga o ngā whakaaro matua me ngā whakaaro tautoko?
- Kua whai whakaaro ki ngā mātauranga katoa e tika ana mō te tuhinga?

- He aha te ariā matua o te tuhinga?
- Kua tuhia ngā mātauranga katoa e hiahia ana au/koe kia mau i te kaipānui?
- E tika ana te reo kua whakamahia i te tuhinga kia pai ai te kawenga o ngā whakaaro?
- He mārama te kaipānui ki te raupapatanga o ōku/ōu whakaaro?
- He kupu pai ake i ērā kua whakamahia?
- He kupu pai ake kia mau ai i te kaipānui ngā ariā o te tuhinga?
- Me whai āwhina te kaipānui kia mārama pai ai ia ki te tuhinga?

- E tika ana te ia o te tuhinga?
- E tika ana te noho o ngā tohutō?
- He tika te whakatakotoranga o ngā rerenga tuhituhi?
- Kua tuhia e au/koe ngā kārawarawatanga i ngā wā, i ngā wāhi hoki e tika ana?

- He aha tētahi ara kia tutuki pai ai te tā i te tuhinga?
- Ka tuhituhi au/koe mā te ringa, mā te rorohiko rānei?
- He aha ētahi pikitia, hoa hoa rānei e pai ana?

- He aha ki a koe te ariā matua o te tuhinga?
- He pātai āu mā te kaituhi?
- He pai ki a koe te tuhinga? He aha ai?
- E mārama ana koe ki ngā whakaaro o te kaituhi?

